



**SEVES
GLASS
BLOCK**
PROJECT BOOK

SEVES
GLASS
BLOCK
PROJECT BOOK

www.sevesglassblock.com

Materia. Non materiale Matter. Not material

«I monumenti esistenti compongono un ordine ideale che si modifica quando vi sia introdotta una nuova (veramente nuova) opera d'arte. L'ordine è in sé concluso prima che arrivi l'opera nuova; ma dopo che l'opera nuova è comparsa, se l'ordine deve continuare a sussistere, deve *tutto* essere modificato, magari di pochissimo; contemporaneamente tutti i rapporti, le proporzioni, i valori di ogni opera d'arte, trovano un nuovo equilibrio; e questa è la coerenza tra l'antico e il nuovo.» (T.S. Eliot, *Il sacro bosco*, 1920)

SEVES Glassblock crede che celebri costruzioni del secolo XX erette con l'apporto di ciò che vogliamo chiamare materia, non materiale, con il contributo determinante del *vetromattone* – dal *Padiglione* alla mostra del Werkbund di Colonia del 1914 di Taut alla *Casa Chiarezza* a Ginevra di Le Corbusier del 1929, alla *Casa di Vetro* a Parigi di Chareau e Bijvoët del 1932, alla *Maison Hermès* a Tokyo di Piano del 2001 –, rappresentino l'ordinata sequenza ideale, una fra le tradizioni delle quali parlava il poeta con profondità inaudita.

SEVES Glassblock considera le recenti opere dove risalta la propria fornitura industriale – dalla cardinale *Maison Hermès* alla *Biblioteca Deusto* a Bilbao di Moneo del 2008 –, siano conformate e definite dai grandi pannelli di vetromattone, in monocromo rigoroso, sappiano essere nuove (veramente nuove).

SEVES Glassblock immagina nuove anche le venienti opere di *interior design*, quelle destinate a valersi dei pezzi delle collezioni dovute al genio di Mendini, contraddistinte come saranno non solo dalla formastruttura «spaziosa» dentro e fuori, ma anche dalla pelle policroma e *translucente*. – E se la policromia sarà evidente, la translucenza sarà felice, mentre alla trasparenza si andrà aggiungendo il valore. Ma quale? Il mix incomparabile della luminosità naturale con la luminosità artificiale... –

SEVES Glassblock pensa che il circolo virtuoso della Tradizione Unitaria delle Architetture del Vetromattone (T. U. A. V.), neppure si attiverebbe se, qui e ora, l'innovazione non fosse affermata come essenza della civiltà insediativa contemporanea, quale fondamento del maturo abitare contemporaneo.

Vittorio Savi

“The existing monuments form an ideal order among themselves, which is modified by the introduction of the new (the really new) work of art among them. The existing order is complete before the new work arrives; for order to persist after the supervision of novelty, the whole existing order must be, if ever so slightly, altered; and so the relations, proportions, values of each work of art towards the whole are readjusted; and this is conformity between the old and the new.” (T.S. Eliot, *The Sacred Wood*, 1920)

SEVES Glassblock believes that the celebrated constructions of the 20th century created with matter, not materials, and with significant *glass block* contributions - such as the 1914 *Glass Pavilion* of the Werkbund Exhibition in Cologne by Taut, the 1929 *Immeuble Clarté* in Geneva by Le Corbusier, the 1932 *House of Glass* in Paris by Chareau and Bijvoët, and the 2001 *Maison Hermès* in Tokyo by Piano - represent the ideal sequential order, mentioned above with unprecedented insight.

SEVES Glassblock perceives the recent works distinguished by its own product line - from the cardinal *Maison Hermès* to the *Deusto Library* in Bilbao by Moneo in 2008 - defined by large glass block surfaces in strict monochromes, to be new (really new).

SEVES Glassblock also considers to be new, the future works of *interior design* that will benefit from the collections made possible by the genius of Mendini and characterized not only by their “spacious” structural forms, inside and out, but also by their *polychrome* and *translucent skins*. These radiant polychromes will accentuate the translucency of the design, and increase the transparency which adds value. What value? The incomparable mix between natural and artificial light.

SEVES Glassblock recognizes that the trend of the Unitary Tradition of Glass Block Architecture (U.T.G.B.A.), would not exist if, here and now, innovation was not affirmed as the essence of contemporary living.

Vittorio Savi



AMERICA

TORRE MALECON
Buenos Aires - Argentina 54

HOME & INTERIORS 82



ASIA

MAISON HERMÈS
Tokyo - Japan
Project: Renzo Piano Building Workshop 8

THE RECEPTION CENTRE OF "UPDOWN COURT"
Taichung - Taiwan
Project: Gong Shu Zhang
Aura Architects & Associates 52

OSU301 Shopping Centre
Tokyo - Japan 68

HOME & INTERIORS 82



EUROPE

LIÈGE-GUILLEMINS STATION
Liegi - Belgium
Project: Santiago Calatrava 40

LOCARNO TELEFERIC
Locarno - Switzerland
Project: Mario Botta 49

STOCK EXCHANGE
Amsterdam - Netherland
Project: F. G. Hilgeman, De Steltenberg Groep B.V. 56

SABAH MEDIA CENTRE
Izmir - Turkey
Project: Halidun Uyak 64

Italy

PUCCINI THEATRE
Florence - Italy
Project: Ferrini & Davighi 30

SANTO VOLTO DI GESÙ CHURCH
Rome - Italy
Project: Sartogo Architetti
& Associates Studio 33

WELCOME GLASSBLOCK ON AIR
Milan - Italy
Project: Atelier Mendini 34

ORIBE TEA HOUSE
Italy/France
Project: Kengo Kuma 39

PIRELLI HEADQUARTER
Milan - Italy
Project: Gregotti & International
Associates 45

PALA HOCKEY FOR OLYMPICS GAME
Turin - Italy
Project: Iter Company 58

CONBIPEL SHOPPING CENTRE
Florence - Italy
Project: Baciocchi Associates Studio
& C. Ghno (Conbipel) 60

CARRO SHOWROOM
Milan - Italy
Project: A. De Carlo e G. Dossena ... 39

SEVES GLASSBLOCK FLAGSHIP STORE
Milan - Italy
Project: Atelier Mendini 76

HOME & INTERIORS 82

Germany

S-BAHN STATION EXPO 2000
HANNOVER HAINHOLZ
Hannover - Germany
Project: H.J. Göritz 24

BECK'S LOGISTIC CENTRE
Bremen - Germany
Project: Schulze & Pampus BDA 29

TECHNOLOGY MUSEUM
Berlin - Germany
Project: Ulrich Wolf & Helge Pitz ... 50

AIRPORT LEIPZIG-HALLE
Leipzig - Germany
Project: AG Brunnert Plan GmbH .. 67

OFFICE BUILDING HAMBURG
Hamburg - Germany
Project: Hilde Léon and Konrad
Wohlhage 70

Spain

TIBERIO'S BATHS
Panticosa, (Huesca) - Spain
Project: Moneo-Brock Studio 14

DEUSTO LIBRARY
University of Bilbao
Bilbao - Spain
Project: Rafael Moneo 20

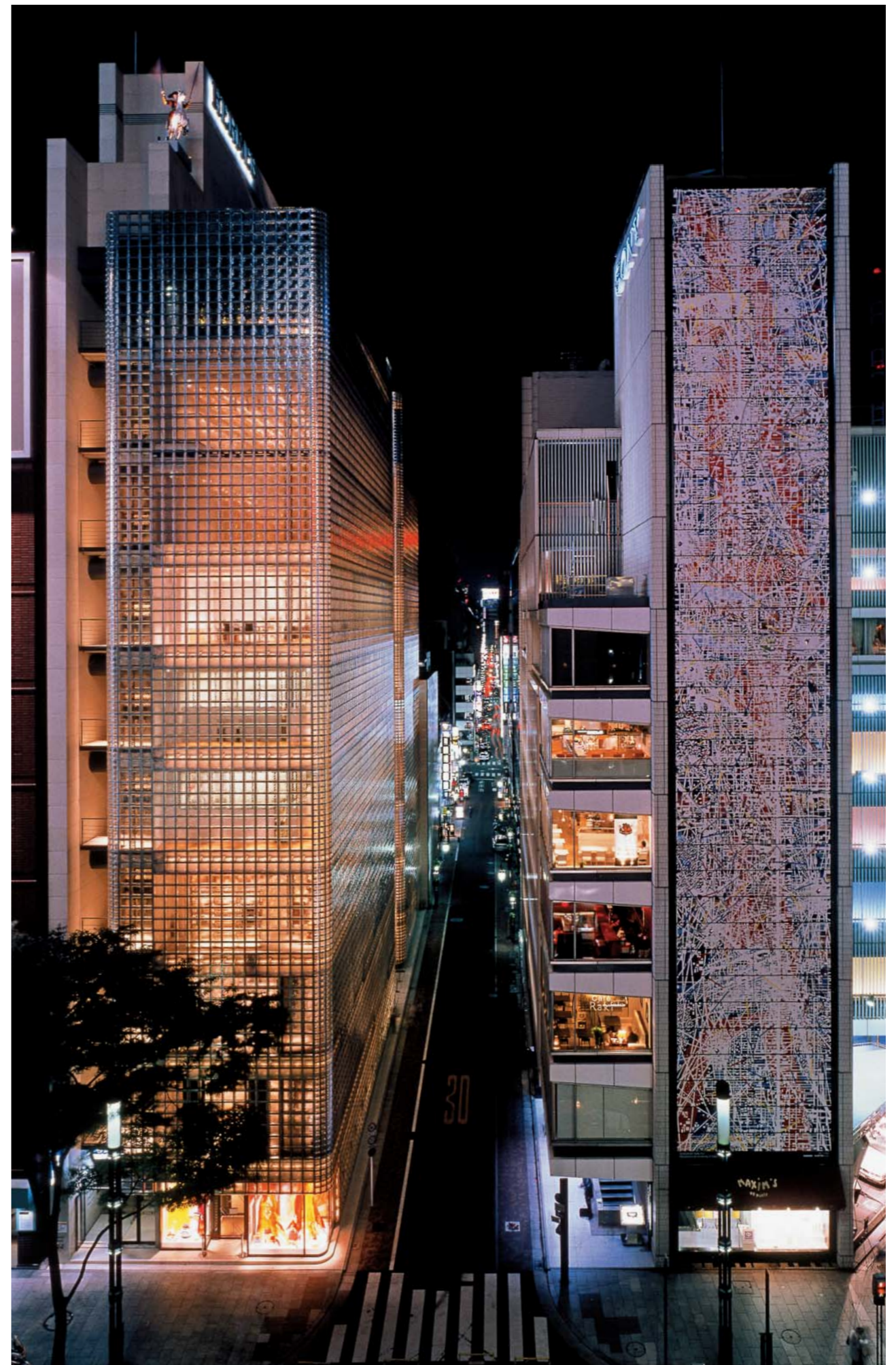
AYUNTAMIENTO DE ASPE
Aspe (Alicante) - Spain
Project: Mariano Cuevas 72

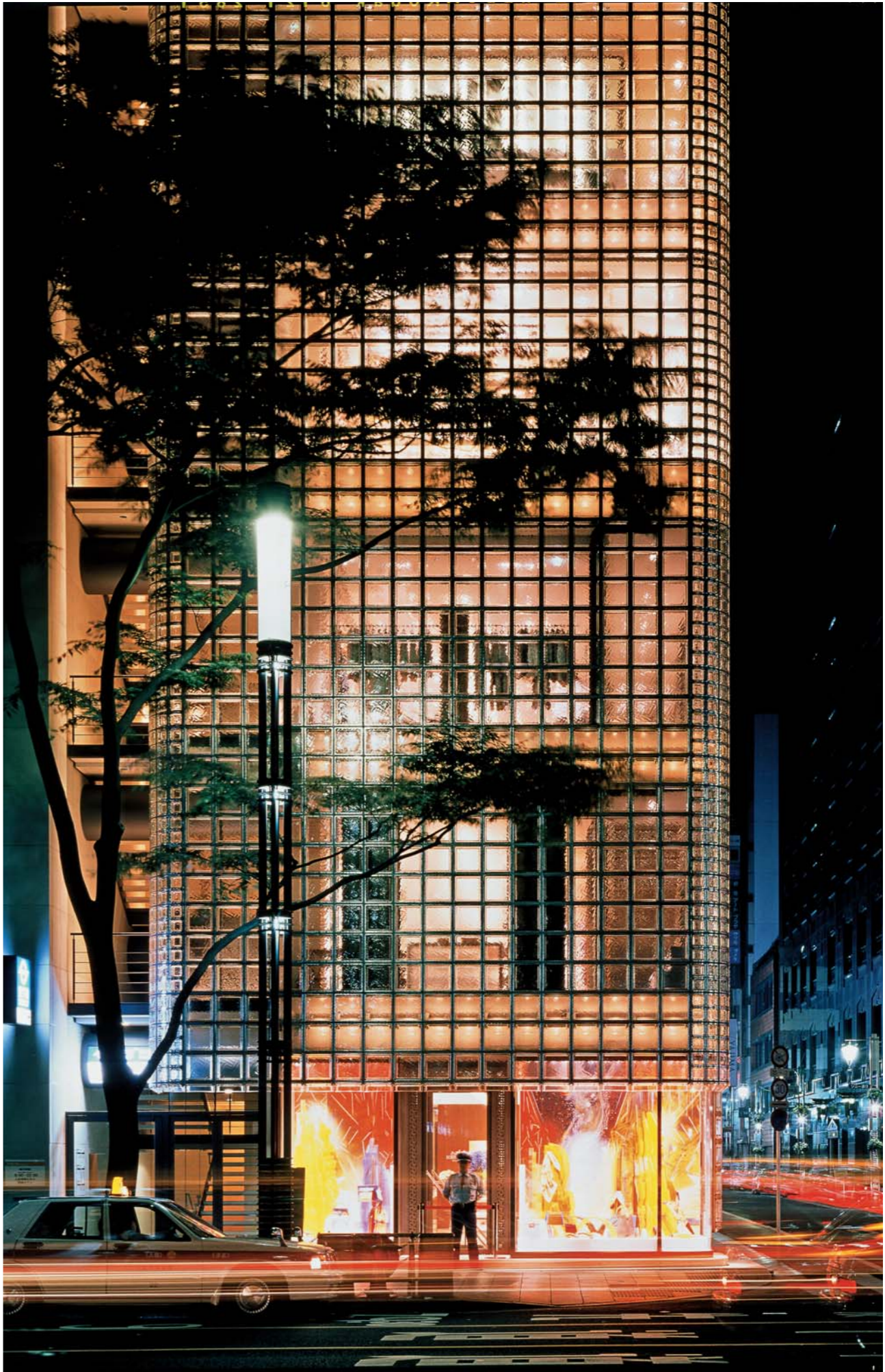
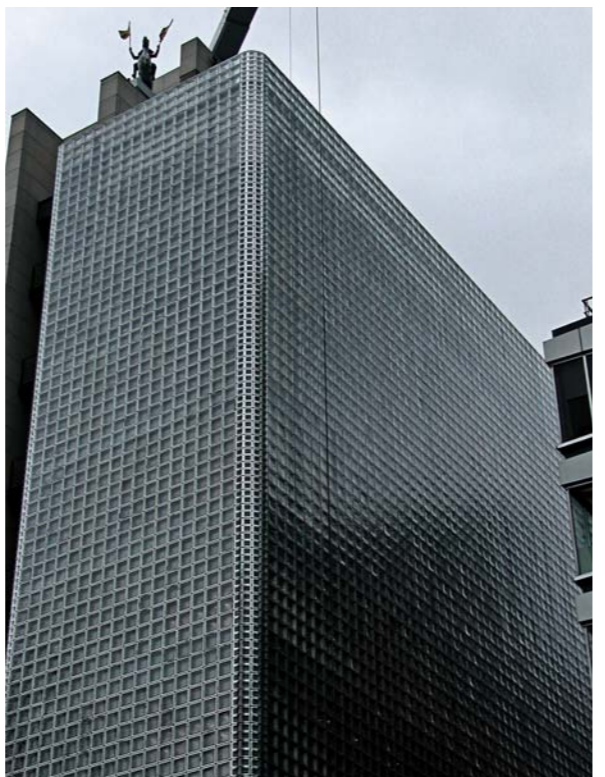
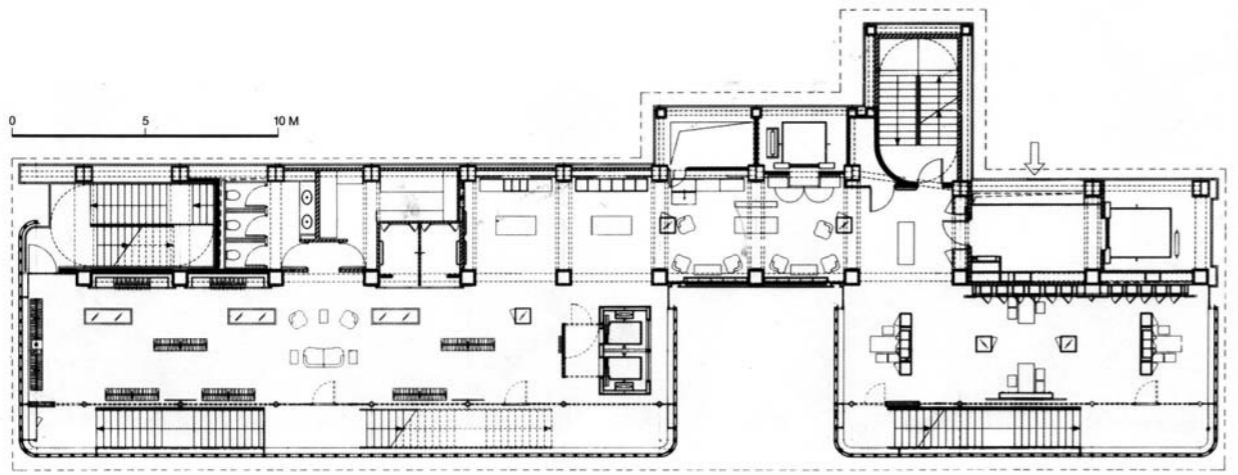
MAISON HERMÈS



Tokyo - Japan
Project:
Renzo Piano
Building Workshop

Year: 2001/2006
Glass block: Q42 & CURVE 24
Quantity: 18.000 pcs.







TIBERIO'S BATHS



Panticosa, (Huesca)- Spain
Project: Moneo-Brock Studio

Year: 2007

Glass block: Q30 TRAPEZOIDAL T SAT

Quantity: 30.000 pcs.



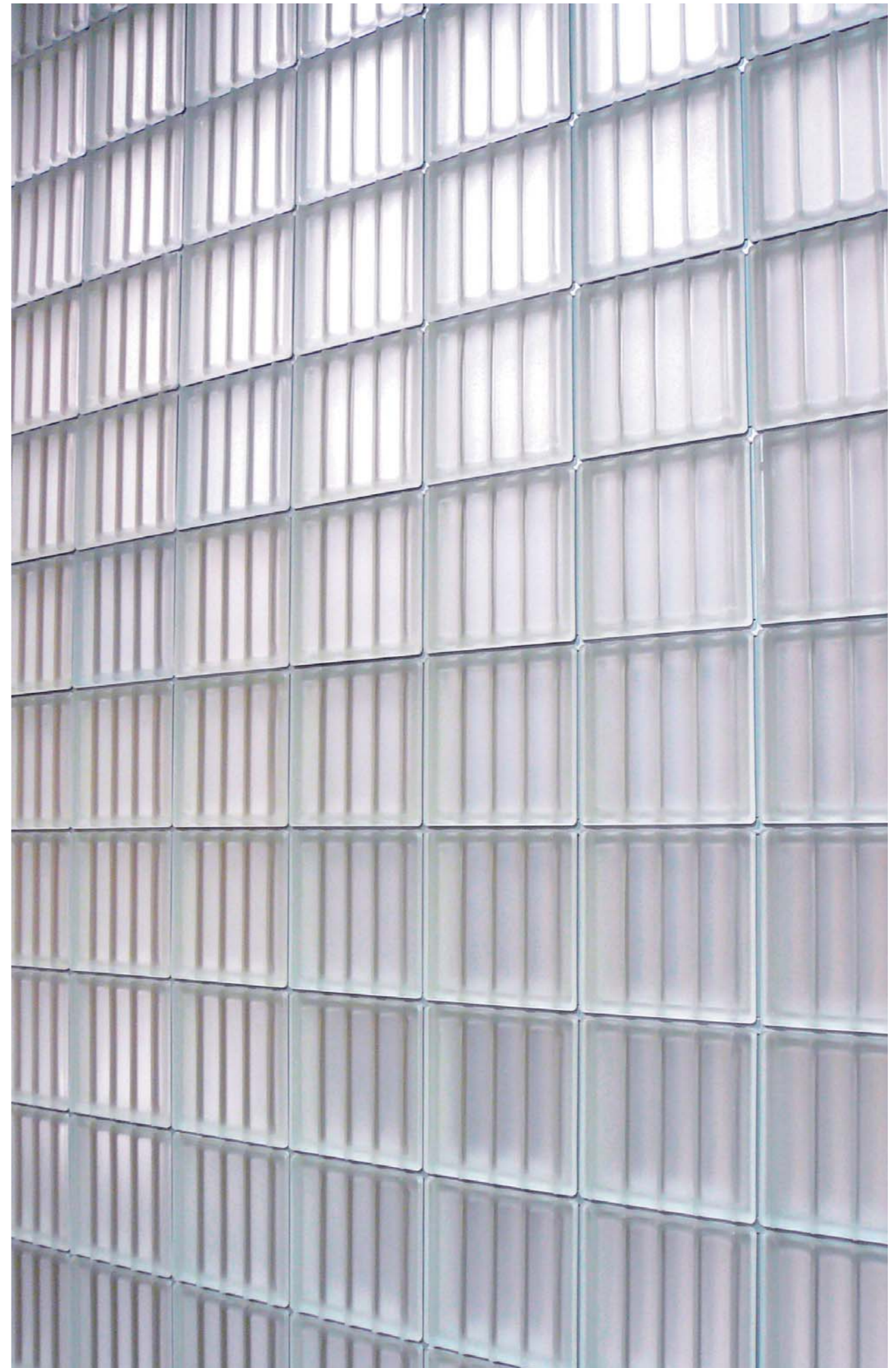


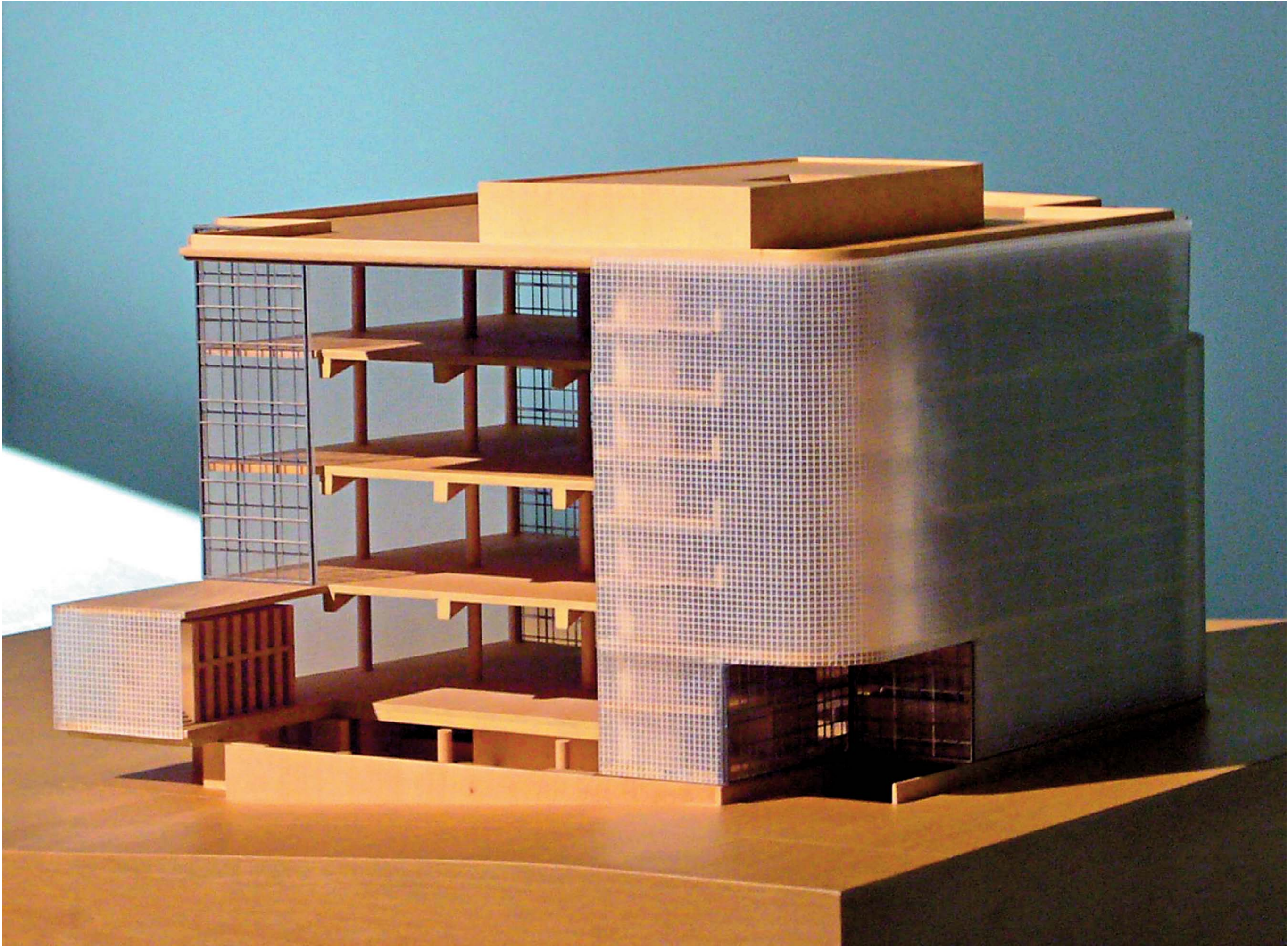
DEUSTO LIBRARY



University of Bilbao
Bilbao - Spain
Project: Rafael Moneo

Year: 2008
Glass block: Q30 DORIC SAT
Quantity: 36.000 pcs.





S-BAHN STATION EXPO 2000 HANNOVER HAINHOLZ

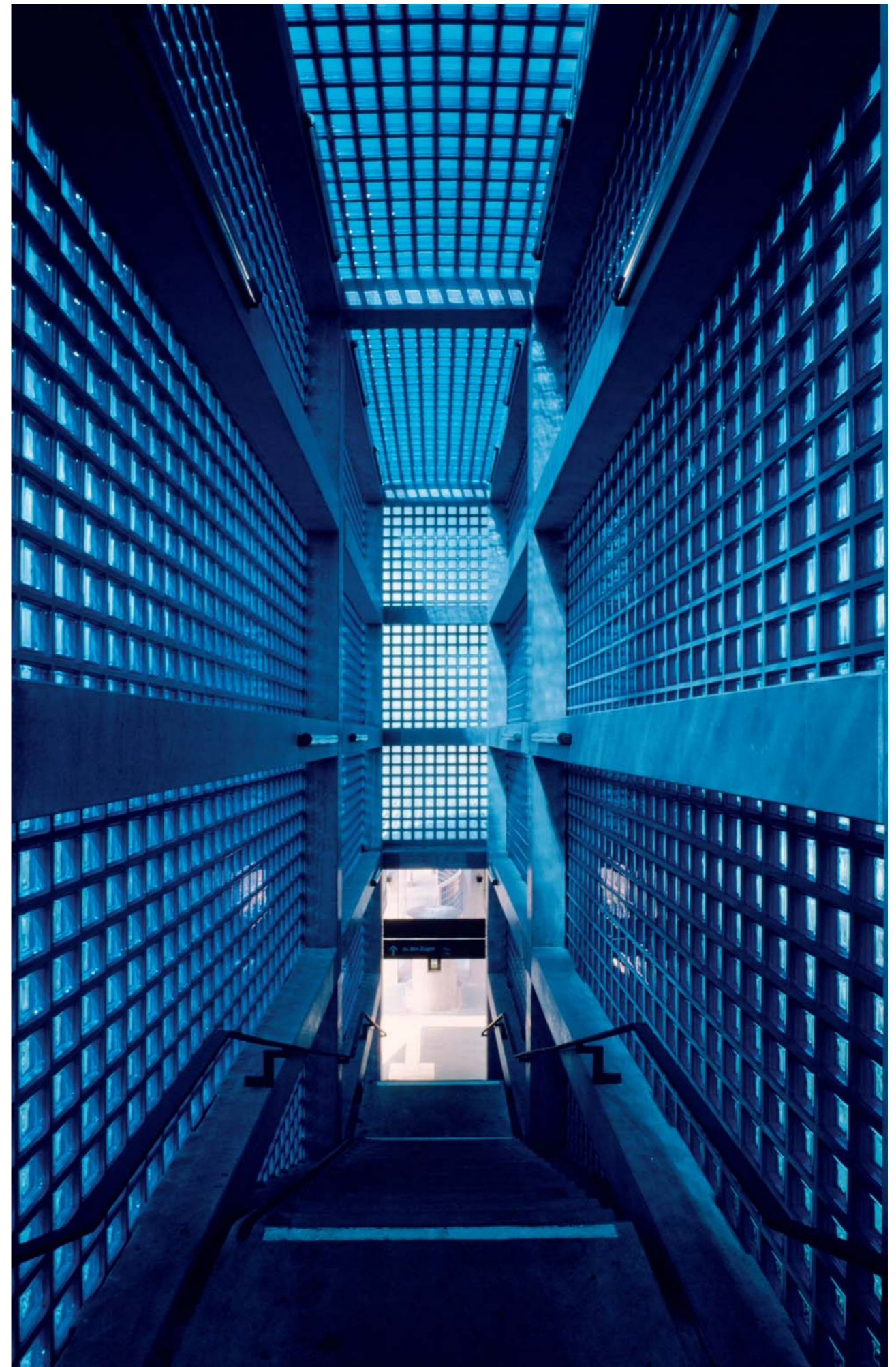


Hannover – Germany
Project: H.J. Göritz

Year: 1997

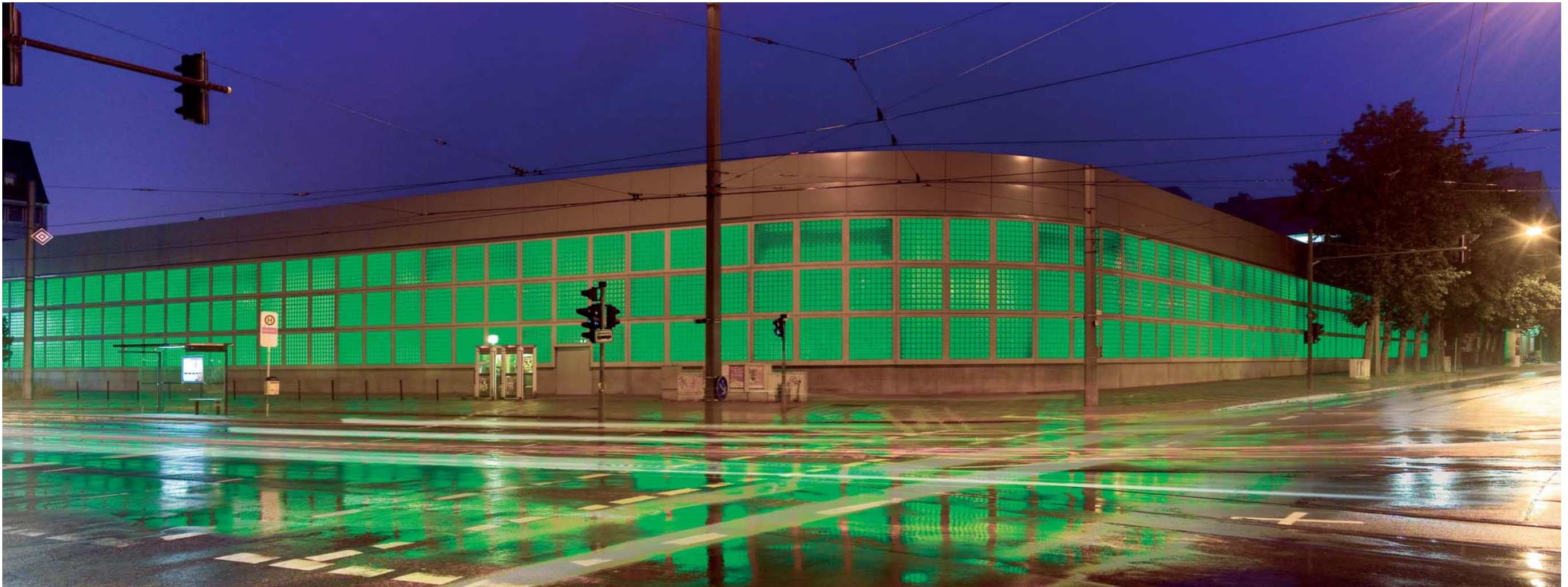
Glass block: Customized 19x19x8cm block with special blue colour

Quantity: 25.000 pcs.





BECK'S LOGISTIC CENTRE



Bremen - Germany
Project: Schulze & Pampus Architekten BDA

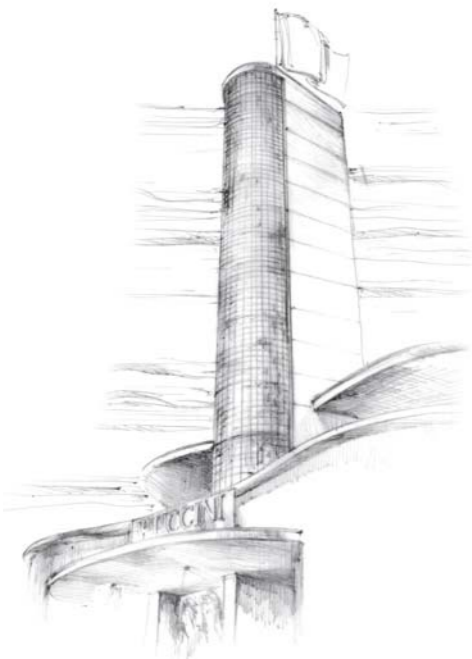
Year: 2007
Glass block: Customized Alpha glass design in Beck's green colour 19x19x8cm
Quantity: 25.000 pcs.



PUCCINI THEATRE

Florence - Italy
Project: Ferrini & Davighi

Year: 2004
Glass block: Customized 19x19x8cm parallel lines with
special side painting
Quantity: 4.500 pcs.



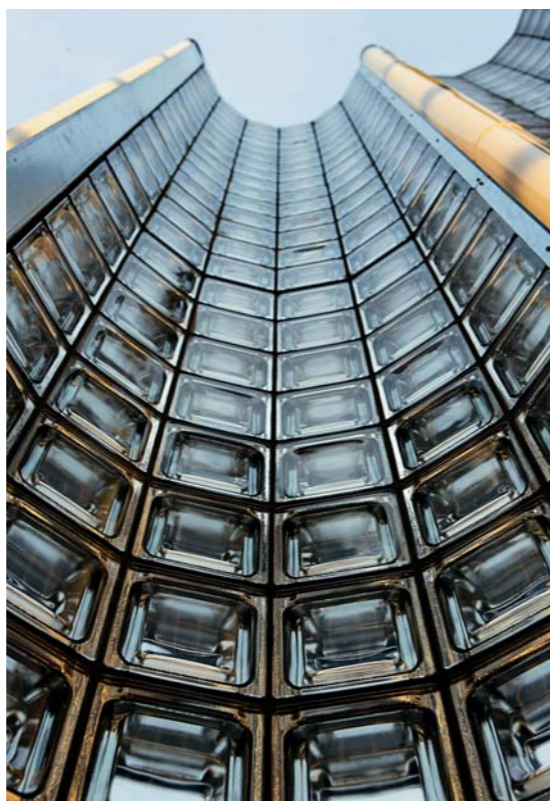


SANTO VOLTO DI GESÙ CHURCH

Rome - Italy
Project:
Sartogo Architetti &
Associates Studio

Year: 2006
Glass block: Customized double face
(clearview+ice)19x19x8cm glass block
Quantity: 4.750 pcs.

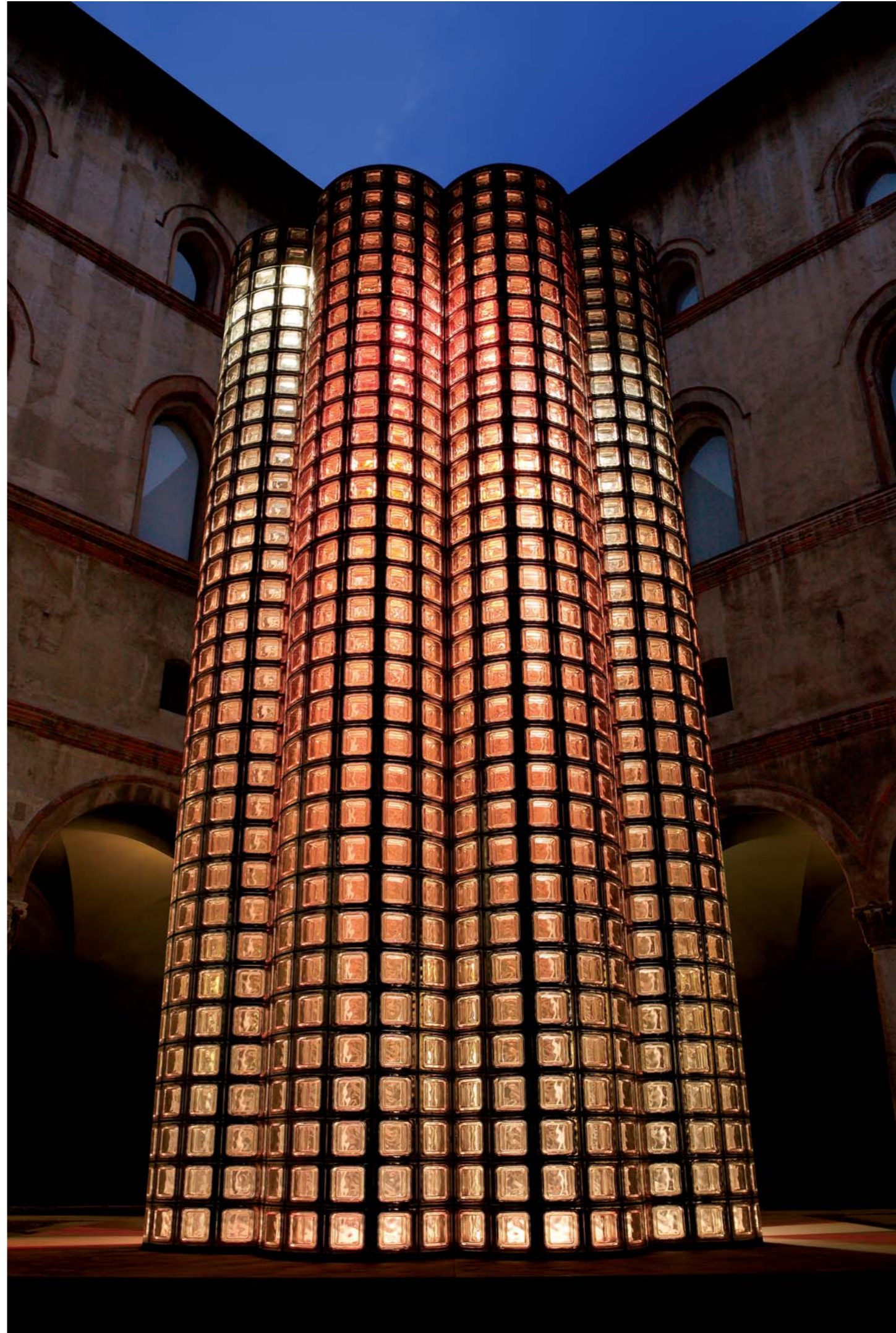


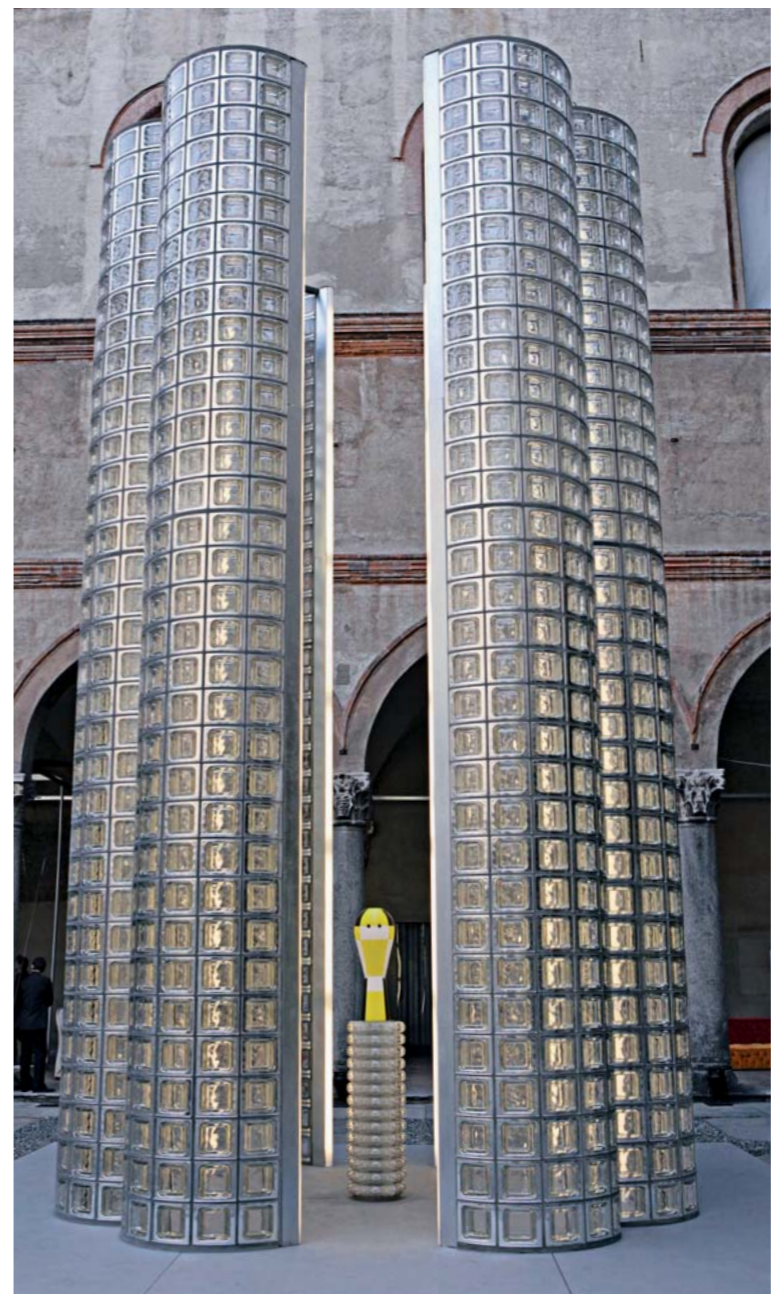
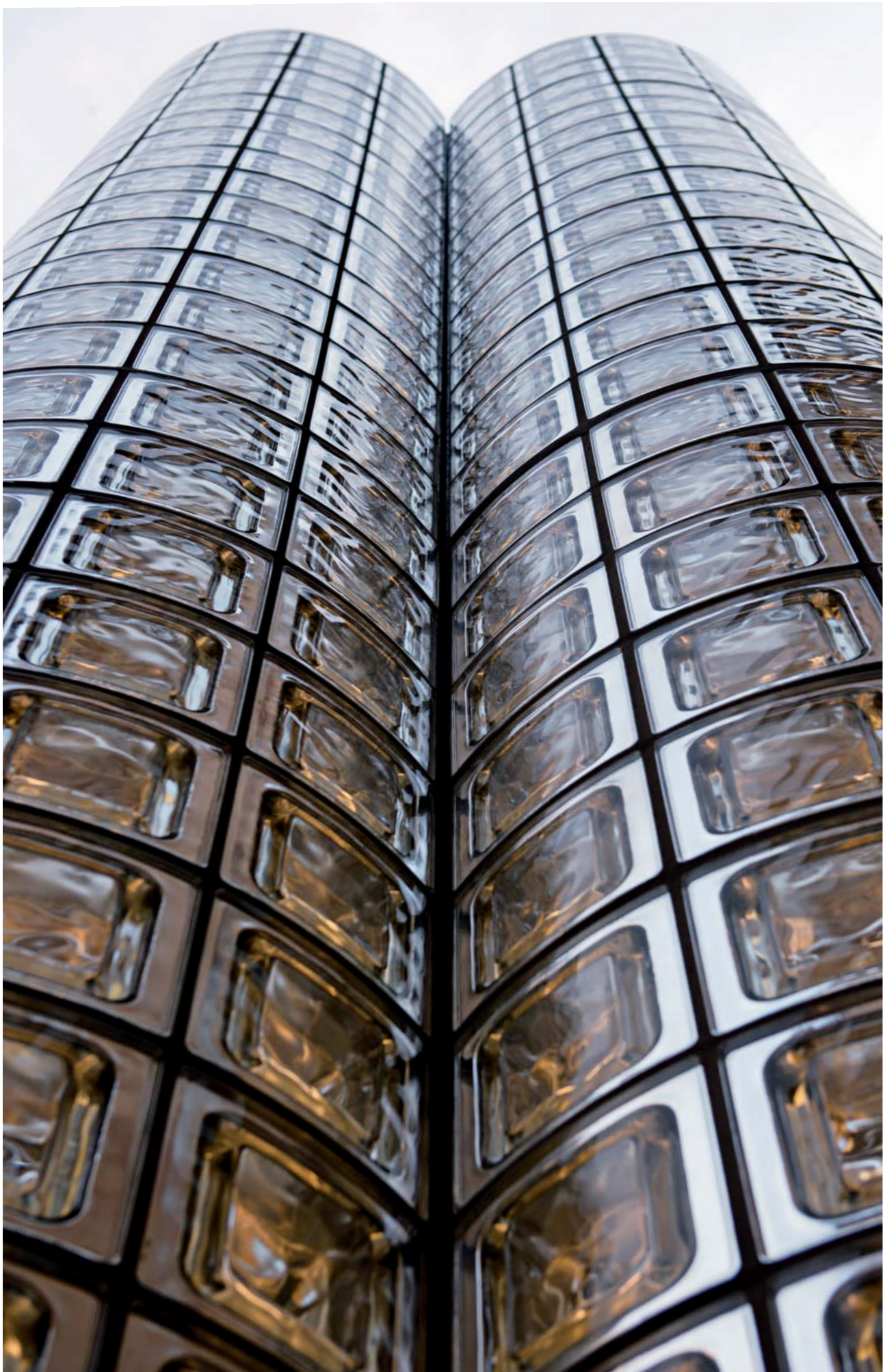


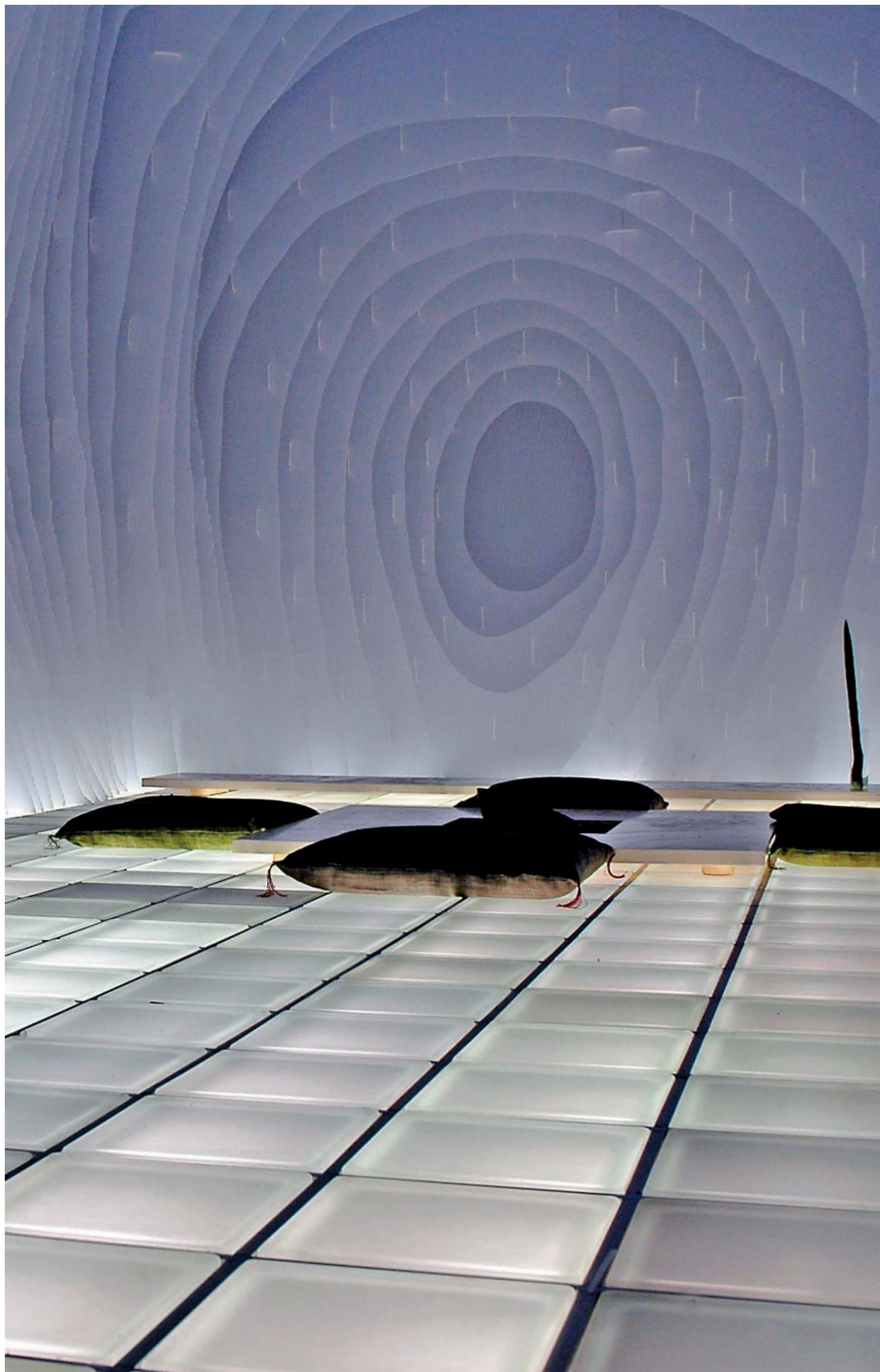
WELCOME GLASSBLOCK ON AIR

Milan - Italy
Project: Atelier Mendini

Year: 2007
Glass block: CURVE 24 O/T MET
Quantity: 1.750 pcs.







ORIBE TEA HOUSE



Italy/France
Project:
Kengo Kuma

Year: 2005-2008
Glass block: 19x19x8cm smooth Satin-finished
for horizontal structures
Quantity: 1.200 pcs.

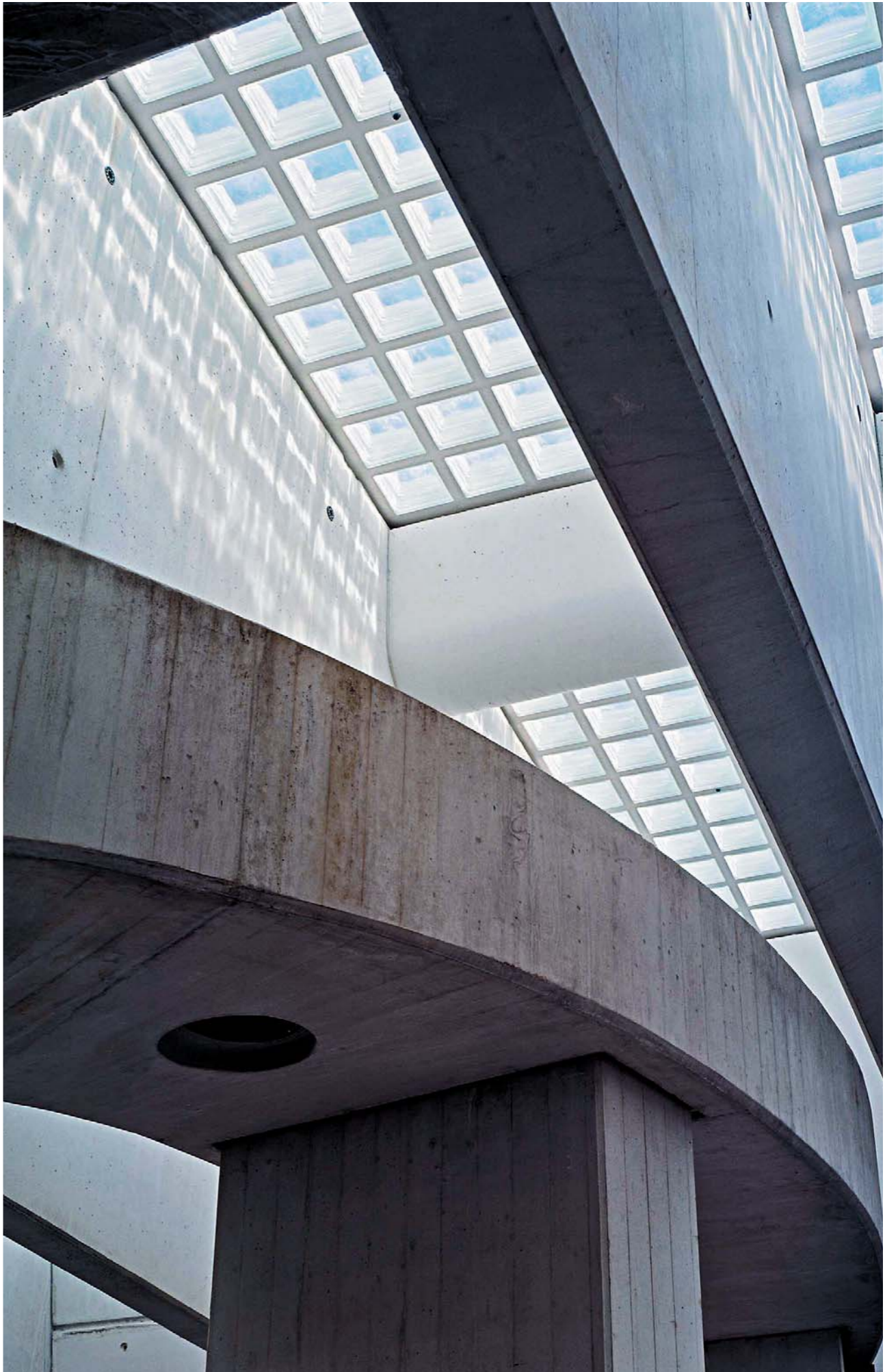


LIÈGE-GUILLEMINS STATION

Liegi – Belgium
Project: Santiago Calatrava

Year: 2006
Glass block: 1919/16 F60 minutes fire resistant
Quantity: 28.000 pcs.







PIRELLI HEADQUARTER

Milan - Italy

Project: Gregotti & International Associates

Year: 2001

Glass block: BG 1919/8 Circles for horizontal structures

Quantity: 28.000 pcs.





LOCARNO TELEFERIC



Locarno - Switzerland
Project: Mario Botta

Year: 2000
Glass block: NEUTRO Q19 T SAT
Quantity: 4.500 pcs.

TECHNOLOGY MUSEUM

Berlin - Germany
Project: Ulrich Wolf &
Helge Pitz

Year: 2000
Glass block: CLEAR 1919/8 CLEARVIEW
Quantity: 12.000 pcs.

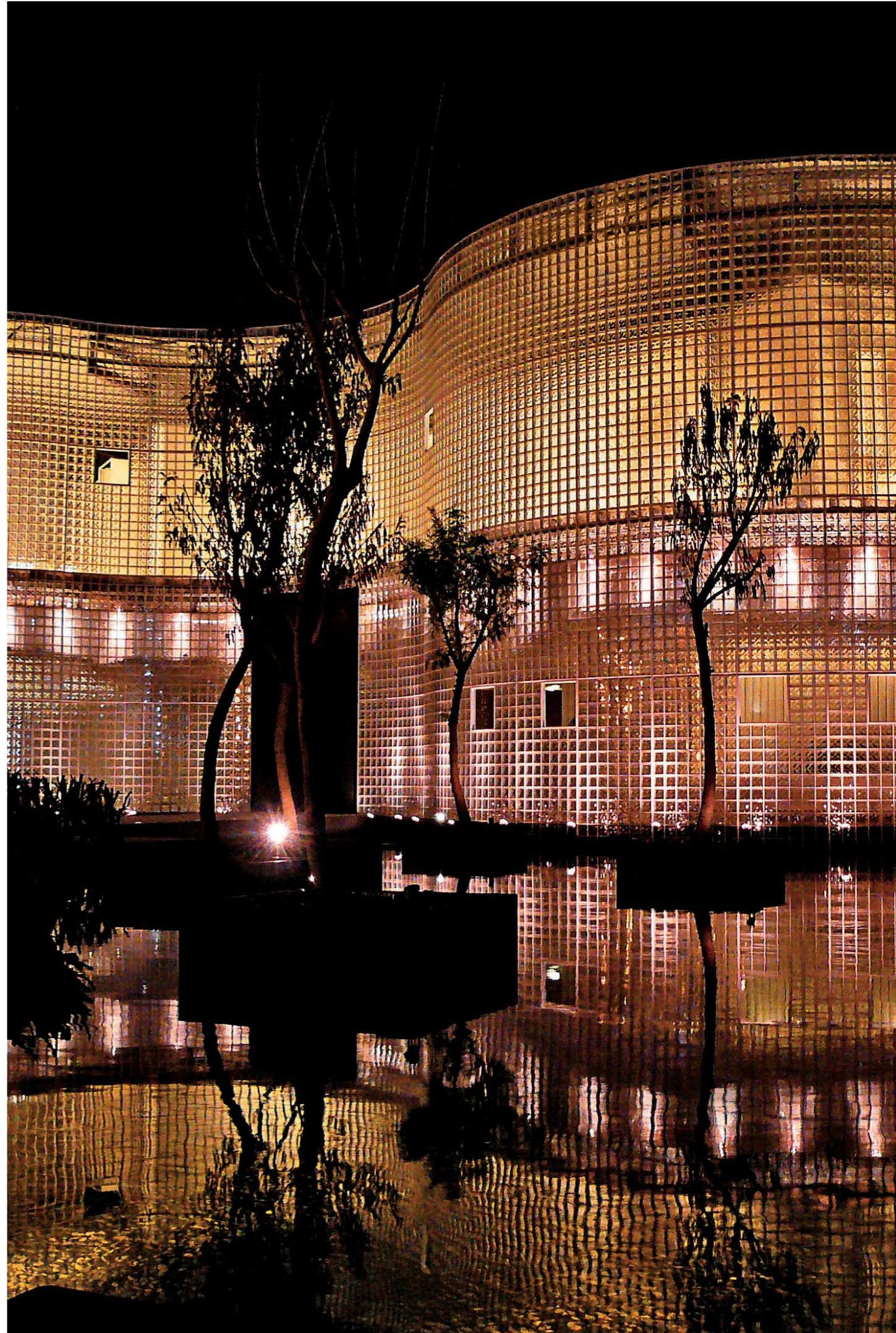




THE RECEPTION CENTRE OF “UPDOWN COURT”

Taichung - Taiwan
Project: Gong Shu Zhang
Aura Architects & Associates

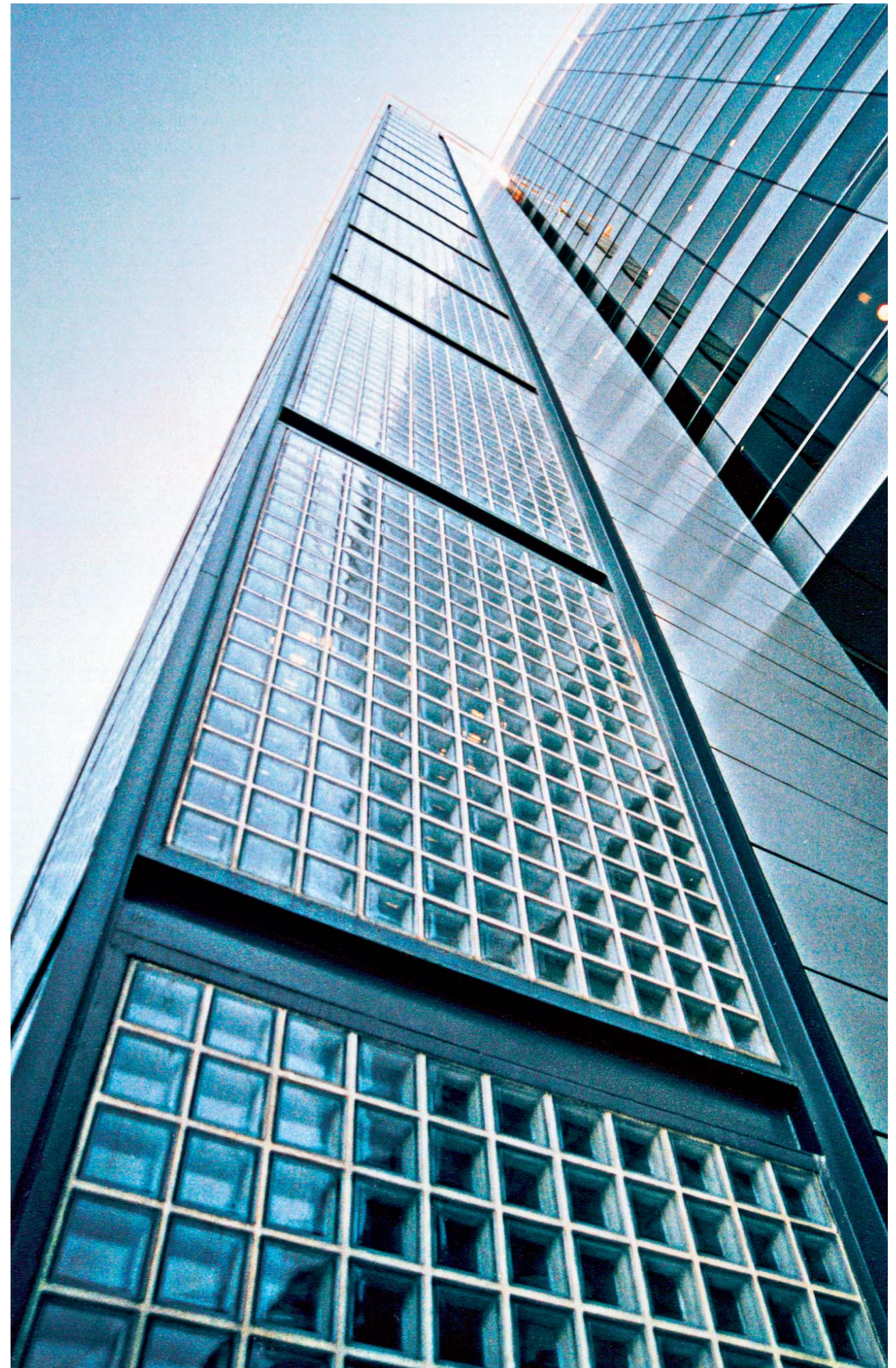
Year: 2007
Glass block: CLEAR 1919/8 WAVY
Quantity: 31.000 pcs.





TORRE MALECON

Buenos Aires - Argentina



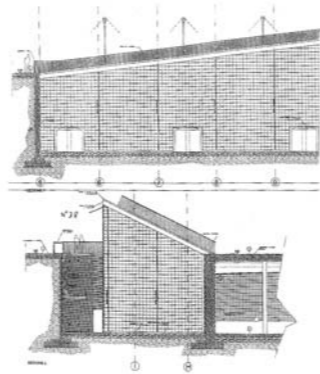
STOCK EXCHANGE



Amsterdam - Netherland
Project: F. G. Hilgeman
De Steltenberg Groep B.V.

Year: 2001
Glass block: different glass blocks combined
Quantity: 4.705 pcs.





PALA HOCKEY FOR OLYMPICS GAME



Turin – Italy
Project: Iter Company

Year: 2005
Glass block: CLEAR 3030/10 WAVY
Quantity: 6.750 pcs.

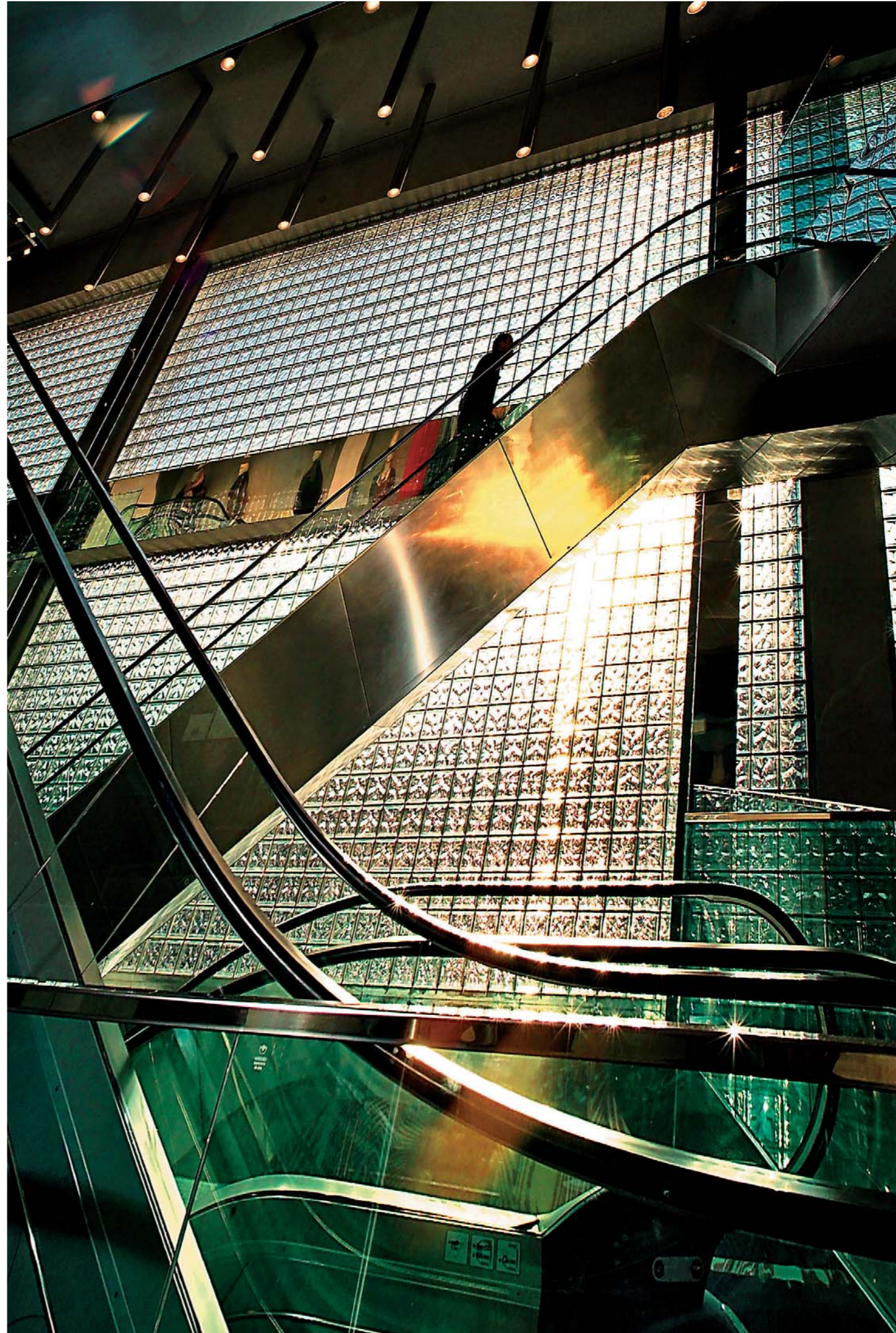




CONBIPEL SHOPPING CENTRE

Florence - Italy
Project: Baciocchi
Associates Studio & C.
Ghno (Conbipel)

Year: 2005
Glass block: Pegasus Metallizzato NEUTRO Q19 O MET
Quantità: 16.000 pcs.





SABAH MEDIA CENTRE

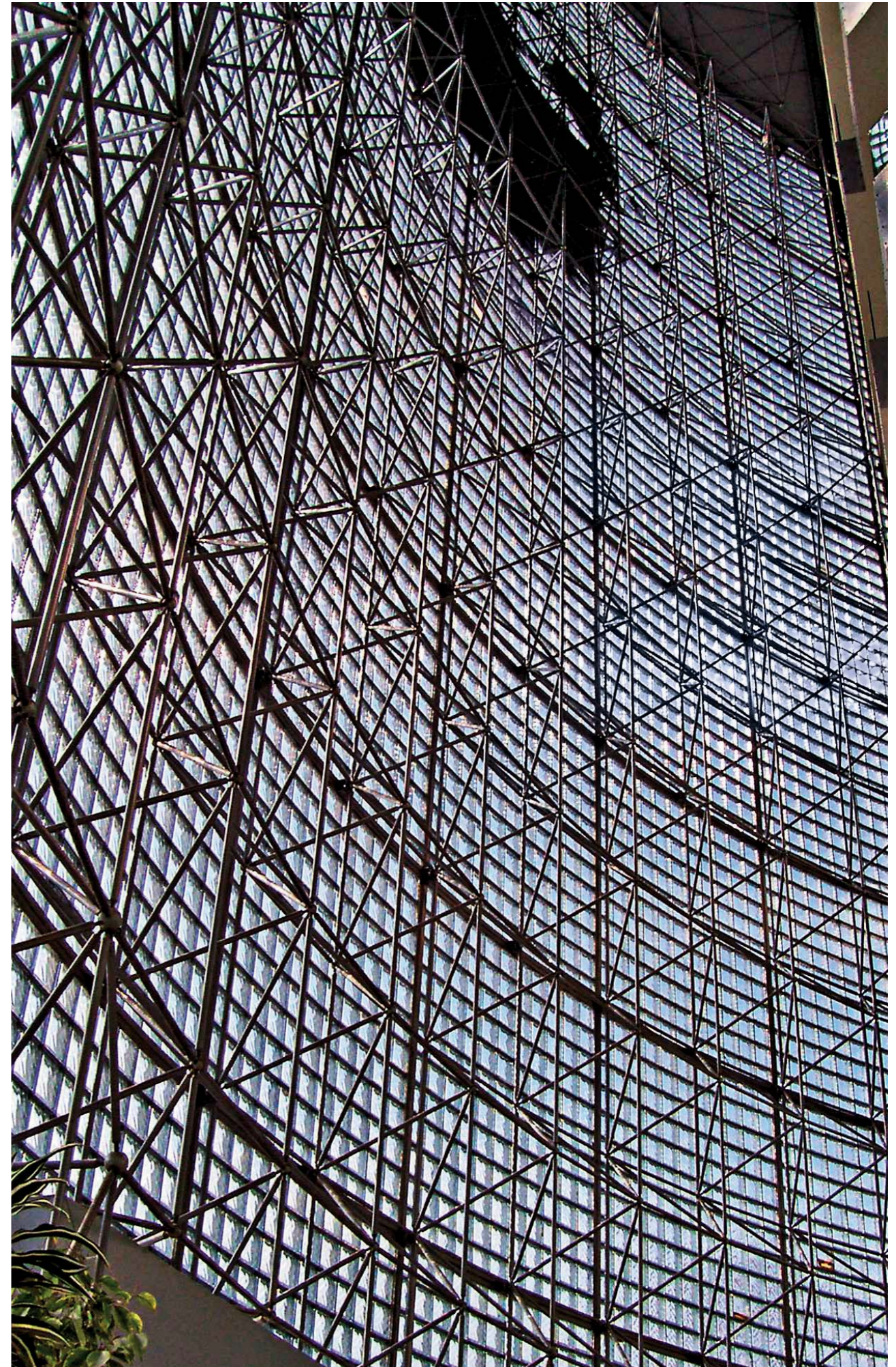


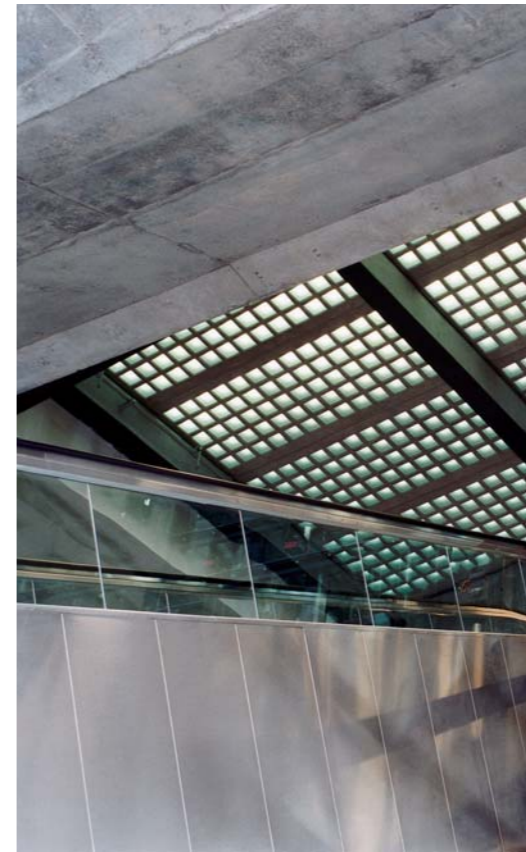
Izmir - Turkey
Project:
Halidun Uyak

Year: 1996

Glass block: NORDICA 2424/8 WAVY

Quantity: 9.900 pcs.





LEIPZIG AIRPORT



Leipzig - Germany
Project: AG Brunnert Plan GmbH

Year: 2003

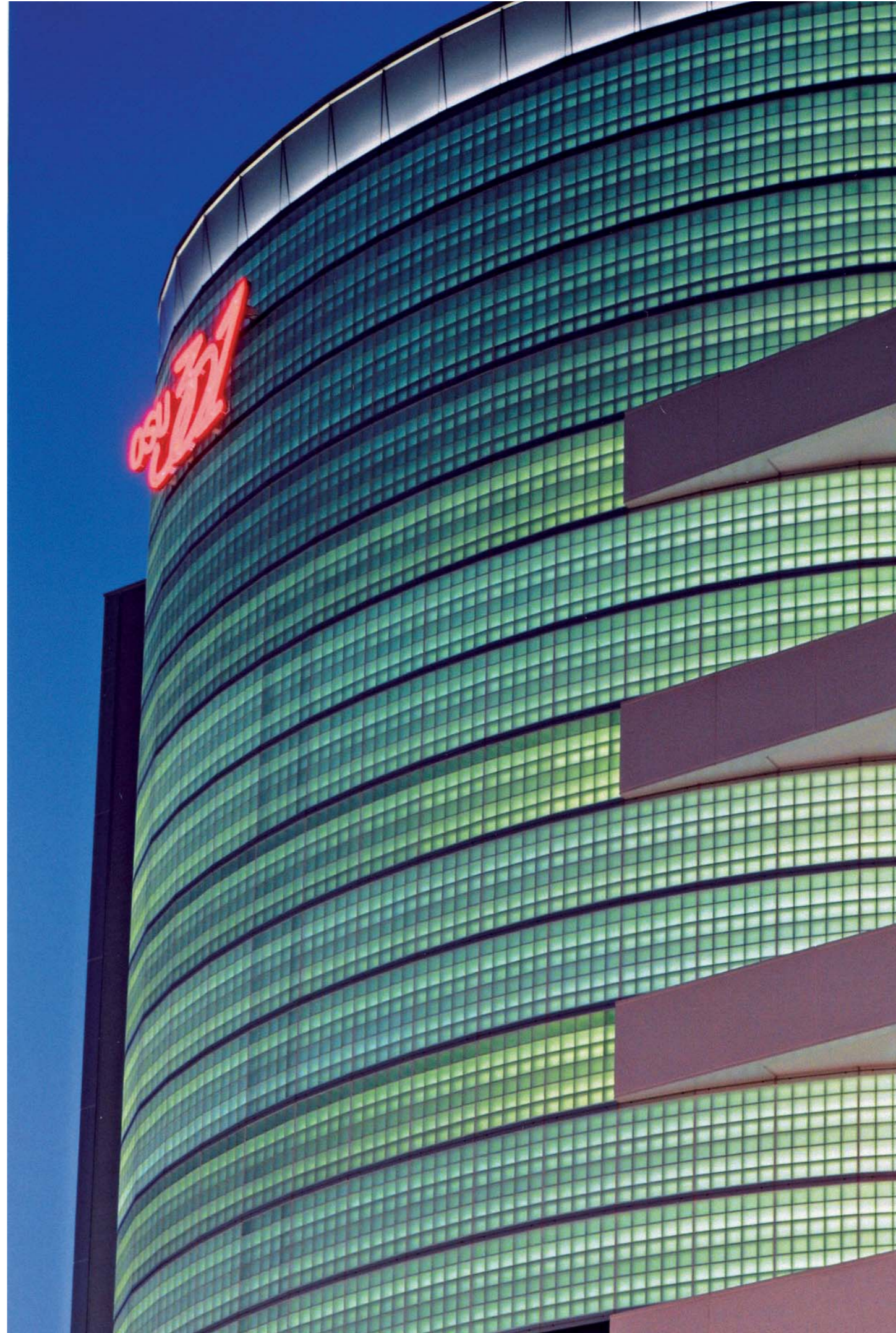
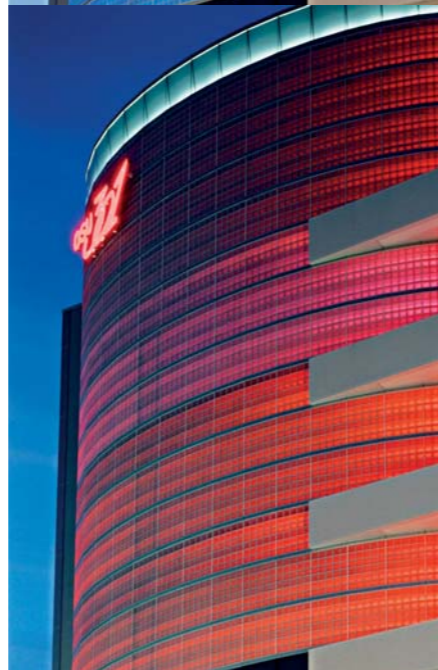
Glass block: CLEAR 1919/8 SAMBA, BG 1919/16 90F CLEARVIEW SAHARA 25

Quantity: 8.000 pcs.

OSU301 SHOPPING CENTRE

Tokyo - Japan

Glass block: NEUTRO Q19 T SAT

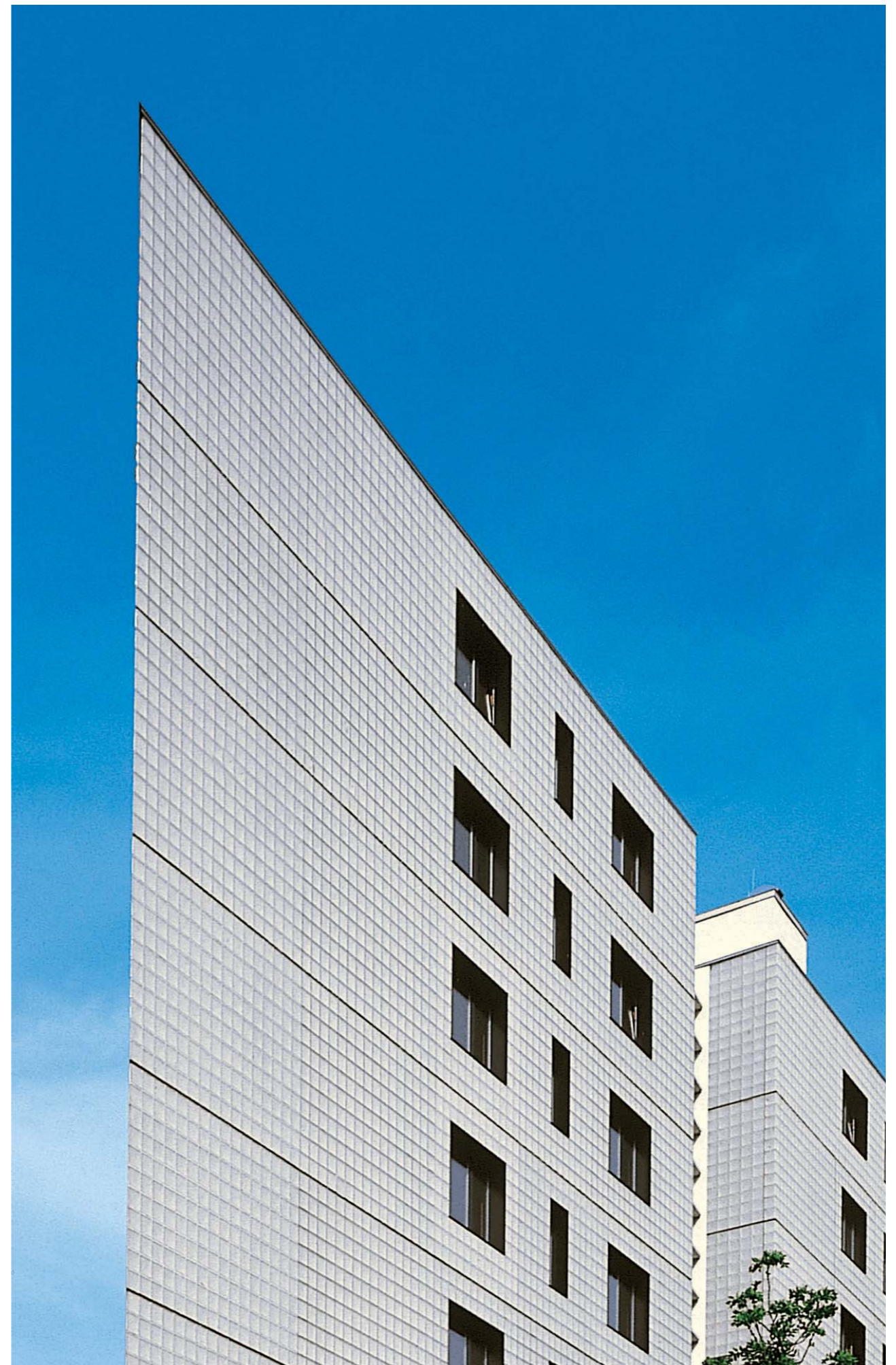


OFFICE BUILDING HAMBURG



Hamburg - Germany
Project: Hilde Léon and
Konrad Wohlhage

Year: 1999
Glass block: CLEAR 1919/8 CLEARVIEW SAHARA 2S,
corner blocks



AYUNTAMIENTO DE ASPE



Aspe (Alicante) - Spain
Project: Mariano Cuevas

Year: 1999

Glass block: B R11/6 CLEARVIEW

Quantity: 5.400 pcs.





CARRO SHOWROOM

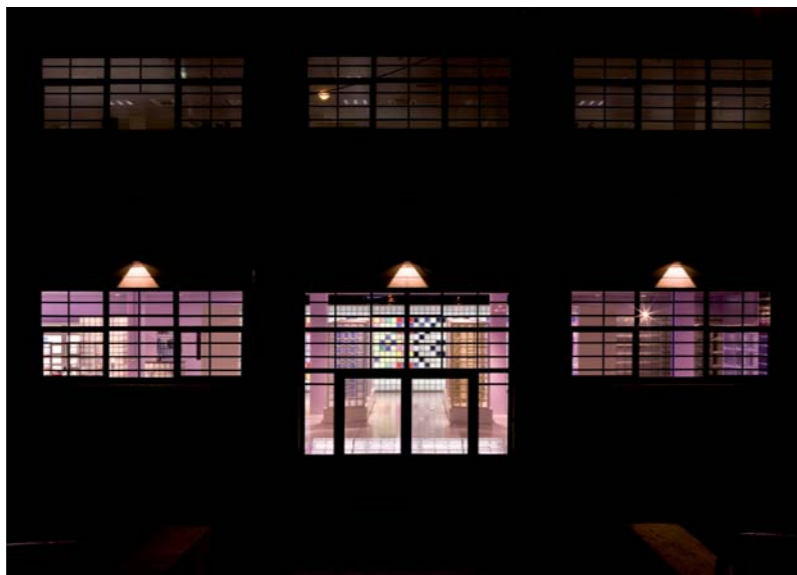


Milan - Italy
Project:
Antonella
De Carlo e
Gianluigi
Dossena

Year: 2007
Glass block: NEUTRO Q19 T MET,
NEUTRO ANG QUADRATO O MET

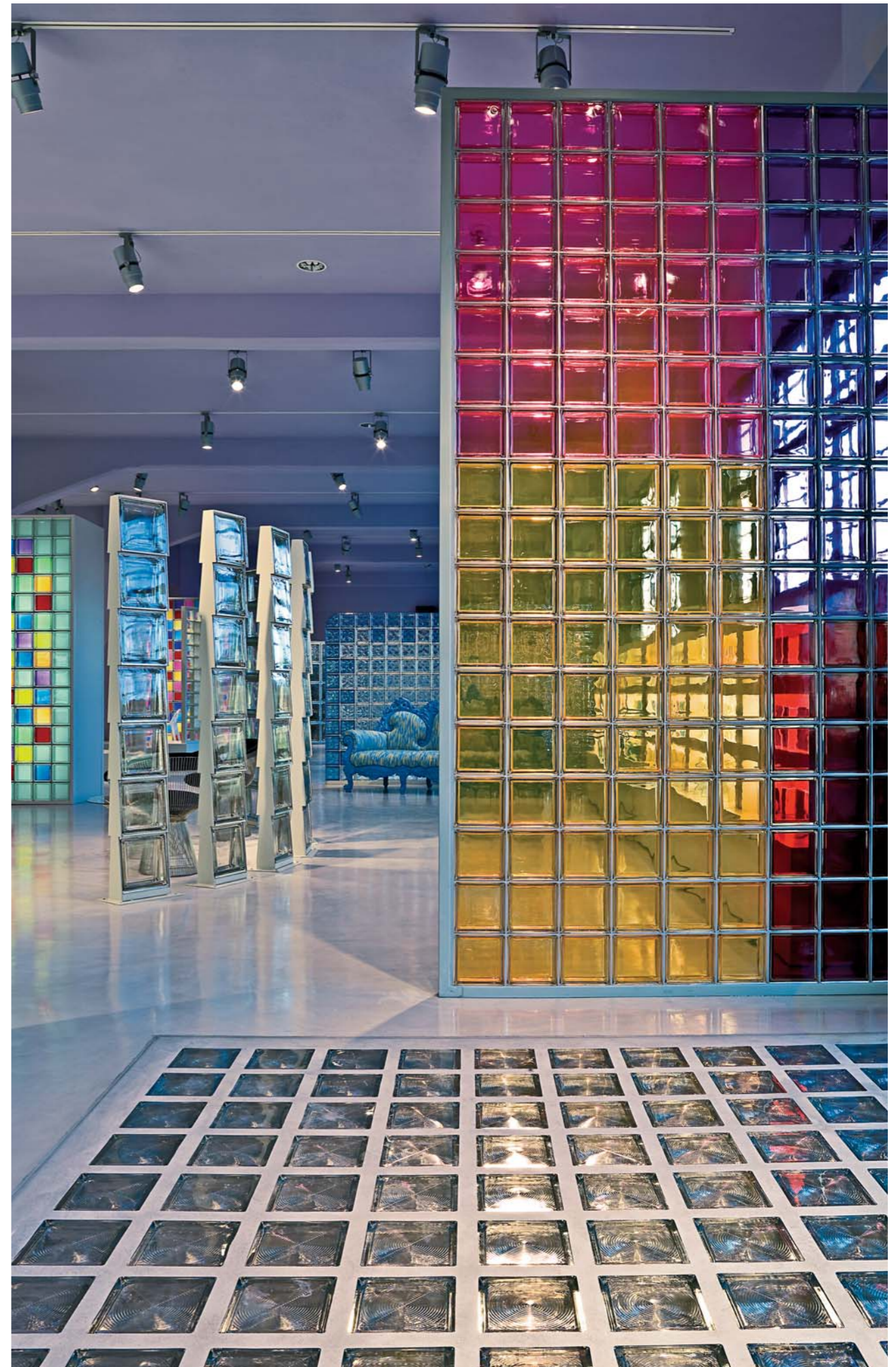


SEVES GLASSBLOCK FLAGSHIP STORE

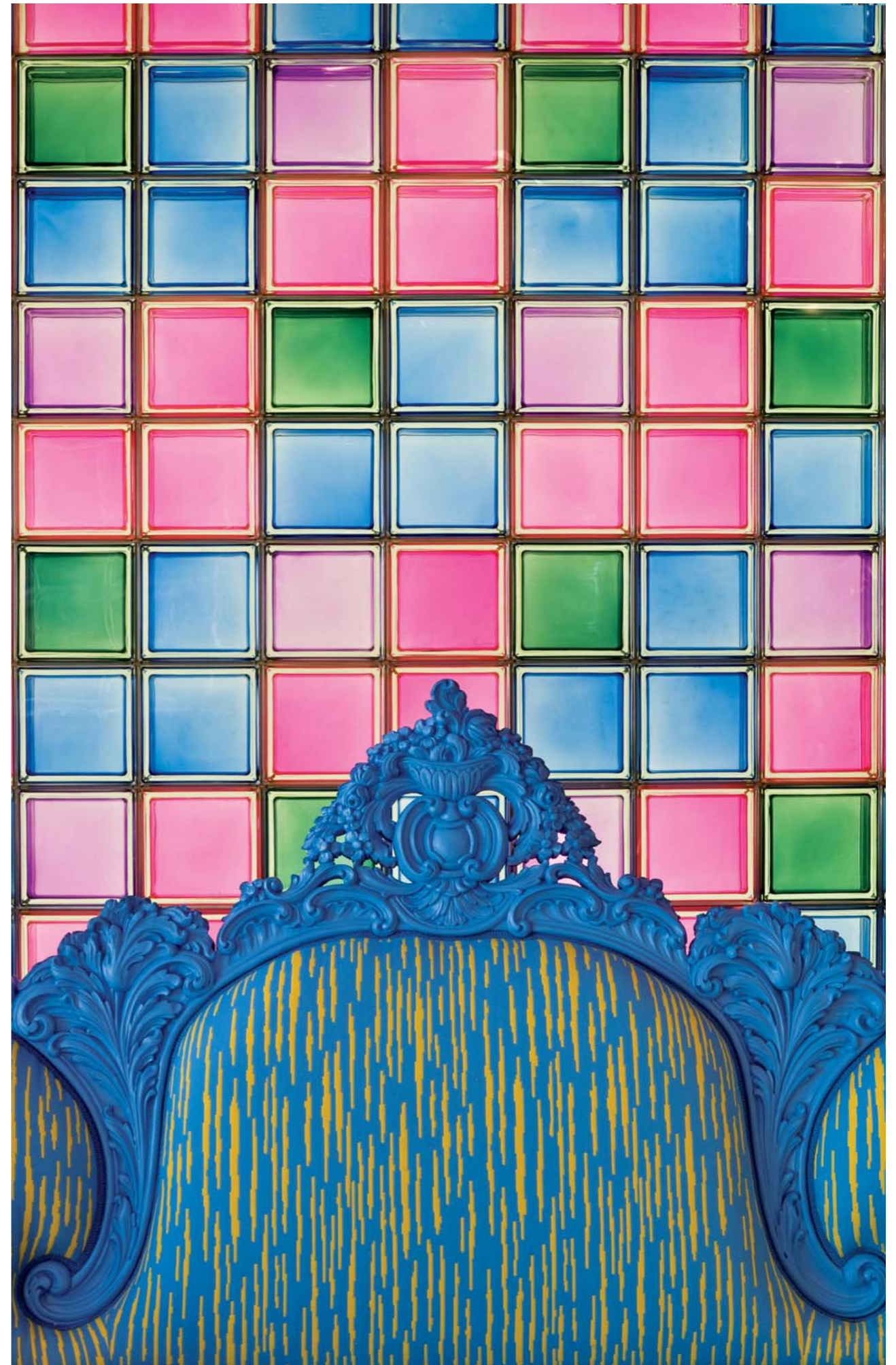


Milan - Italy
Project: Atelier Mendini

Year: 2008
Glass block: Mendini Collection combinations

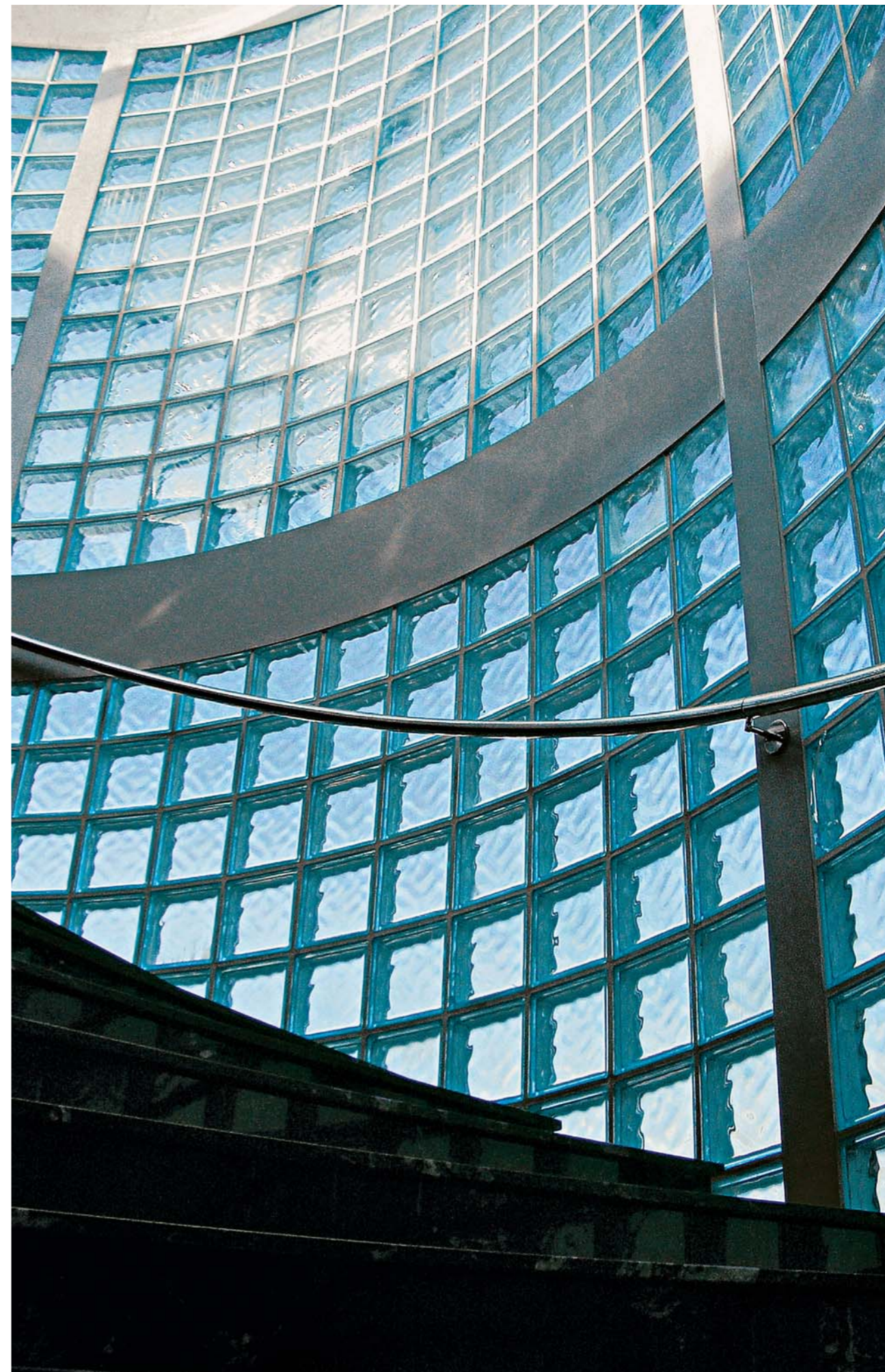






HOME & INTERIOR

All over the world





alle pagine precedenti / on previous pages
 Home & Interior - Stairs wells
 Technology Line - CLEAR 3030/10 WAVE

Maison Hermès - Japan
 Project : Renzo Piano Building Workshop,
 2001-2006
 Ginza Collection - Q42 O/T MET



Home & Interior - Kitchen
 Pegasus Metallizzato - LILLA Q19 O MET

Home & Interior - Living
 Trapezoidal - Q30 TRAPEZOIDAL T MET



Home & Interior - Kitchen
 Project: Atelier Mendini & Anna Gili, 2007
 Pegasus Metallizzato - NEUTRO Q19 O MET
 Pegasus Metallizzato - NEUTRO TER LINEARE O MET
 Pegasus Metallizzato - ROSA Q19 O MET





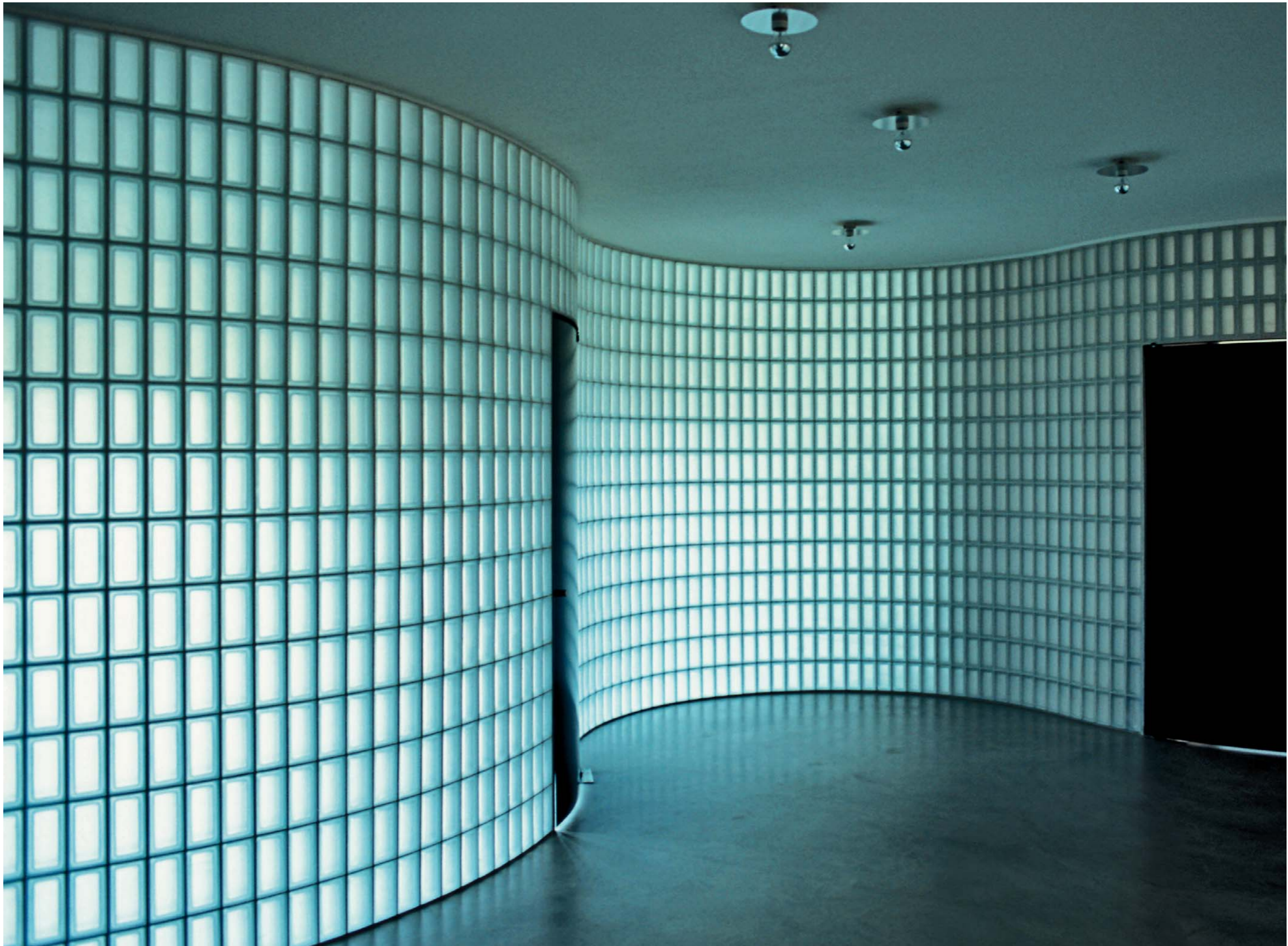
alle pagine precedenti / on previous pages
 Home & Interior – Living
 Pegasus Metallizzato – NEUTRO Q19 T MET



Home & Interior – Night Zone
 Pegasus – NEUTRO Q19 T SAT
 Pegasus Metallizzato – ROSA Q19 O MET
 Pegasus Metallizzato – ROSA TER LINEARE O MET

Home Interior – Night Zone
 Project: Simone Micheli, 2005
 Pegasus Metallizzato – NEUTRO Q19 T MET







alle pagine precedenti / on previous pages
Kursaal Complex – Italy
 Project: Lapo Ruffi – LRA, 2004
 Pegasus – NEUTRO R09 T SAT

Home & Interior – Bathroom
 Project: Atelier Mendini & Anna Gili, 2007
 Pegasus Metallizzato - BLU Q19 O MET,
 BLU TER LINEARE O MET

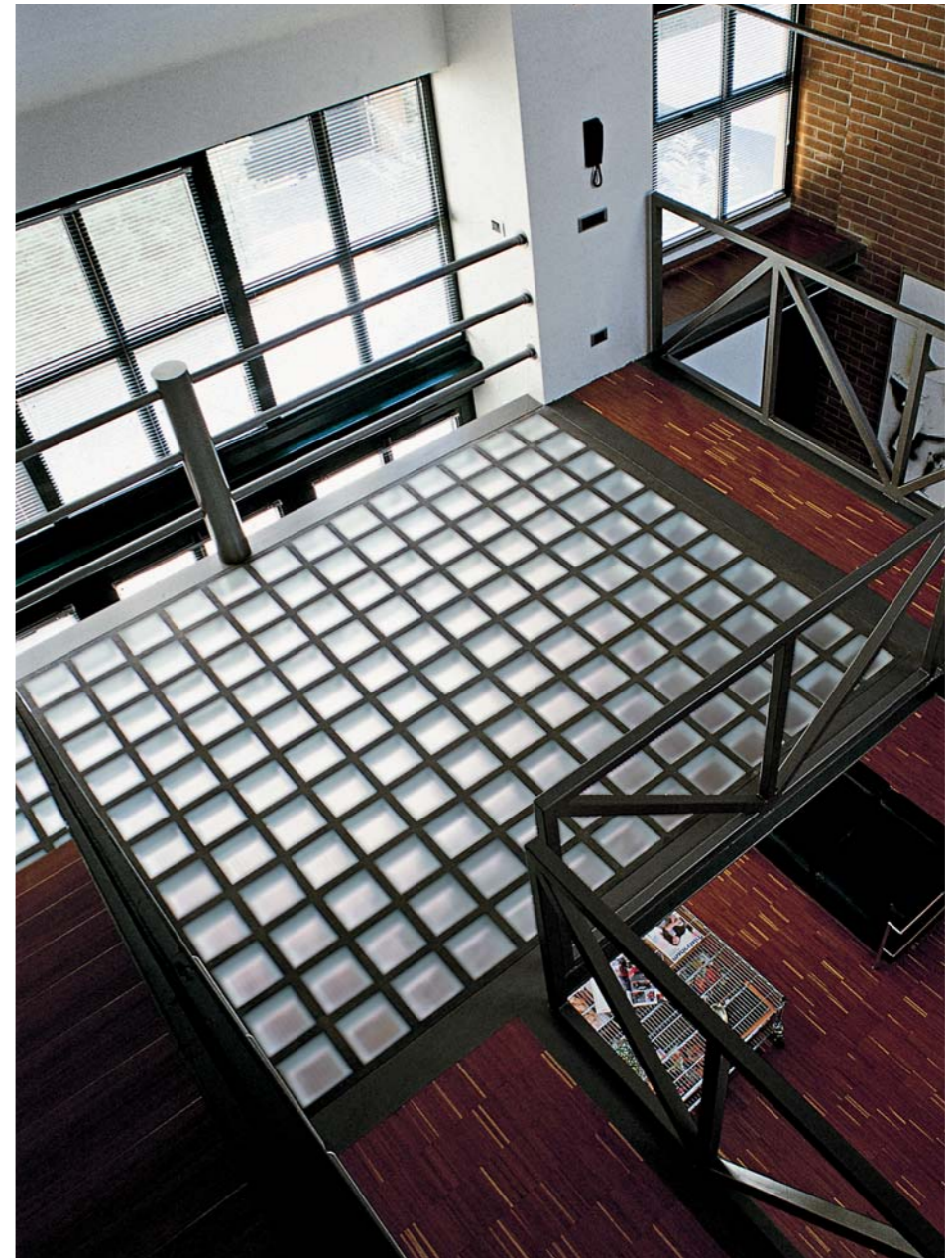
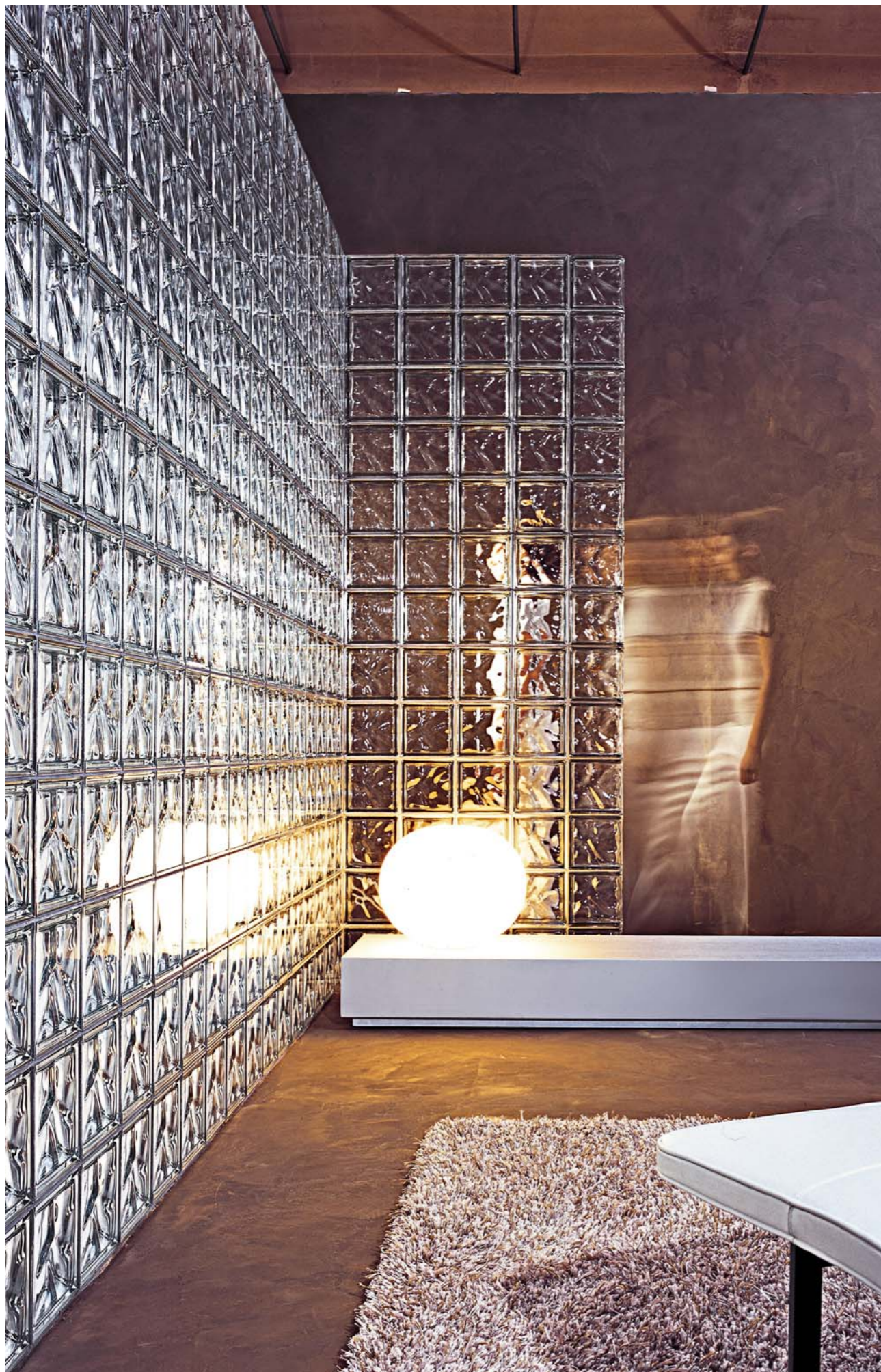
Pegasus/Pegasus Metallizzato - NEUTRO Q19 T,
 NEUTRO R09 O MET, NEUTRO ANGOLARE
 ESAGONALE O MET

Pegasus/ Pegasus Metallizzato - NEUTRO Q19 O
 SAT, NEUTRO Q19 T MET, NEUTRO R09 O MET,
 NEUTRO TER LINEARE O MET

Pegasus Metallizzato - GIALLO Q19 O MET





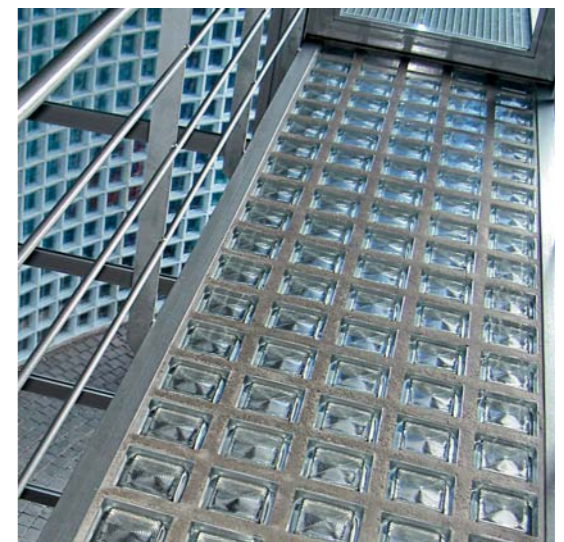


*alle pagine precedenti
on previous pages*
Seves glassblock Flagship Store - Italy
 Project: Atelier Mendini, 2008
Bathroom
 Mendini Collection – AMETISTA Q19 T MET
Bar
 Mendini Collection – WHITE 100% T MET

Home & Interior - Living
 Pegasus Metallizzato – NEUTRO Q19 O MET,
 NEUTRO TER LINEARE O MET

Home & Interior – Pavers application
 Technology Line

alle pagine seguenti/on next pages
Tiberio's Baths – Wellness Centre, Spain
 Project: Moneo-Brock Studio, 2007
 Trapezoidal - Q30 TRAPEZOIDAL T SAT





Altre referenze

More references

EUROPE

FERRARI BUILDING
Maranello (Modena) - Italy
Project: n.a., 1998

APARTHOTEL MIRASIERRA
Madrid - Spain
Project: n.a., 2002

POLIDEPORTIVO BETIONDO
Ermua (Vizcaya) - Spain
Project: n.a., 2002

CENTRO DIA CAI
Zaragoza - Spain
Project: Gravalos, 2003

VILLA BIO
Llers (Gerona) - Spain
Project: Enric Ruiz-Geli, 2004

BARCELONA FAIR
Barcelona - Spain
Project: n.a., 2004

CENTRO DE SALUD Y GUARDERIA
Gorraiz (Pamplona) - Spain
Project: n.a., 2004

REFORMA PORTALES
Pamplona (Navarra) - Spain
Project: n.a., 2004

PUBLIC BUILDING
Vlissingen - Netherland
Project: Kokon Projectur, 2005-2007

VIVIENDAS UNIFAMILIARES
Montecanal (Zaragoza) - Spain
Project: n.a., 2005

VIVIENDAS
Malaga - Spain
Project: n.a., 2005

EDIFICIO APARTAMIENTOS
Castrourdiales (Cantabria) - Spain
Project: Comunidad Propietarios, 2006

LA FARGA
Tarragona - Spain
Project: n.a., 2006

LOFTS SEBASTIAN ELCANO
Madrid - Spain
Project: Rafael De La Hoz, 2006

URBANIZACION MONTEGOLF (GARAGE)
Place: Las Rozas (Madrid) - Spain
Project: Vicens Y Ramos, 2006

ASTURIAS TELEVISION
Oviedo (Asturias) - Spain
Project: Rafael Beneytez Duran, 2006

PRIVATE HOSPITAL DEXEUS
Barcelona - Spain
Project: Artigues Y Sanabria, 2007

SEMINARIO DIOCESANO DE ZARAGOZA
Zaragoza - Spain
Project: Jose Maria Valero, 2007

ESQUIN.A.S DEL PSIQUIATRICO
Zaragoza - Spain
Project: Joaquin Sicilia Carnicer, 2007

JOSE ALVALADE STADIUM
Lisbon – Portugal
Project: Tomas Taveira, 2001-2003

NOKIA RESEARCH CENTRE
Helsinki – Finland
Project: Pekka Helin, 1999

KINDERGARTEN
Bettemburg – Luxemburg

CENTRAL BANK
Czech Republic
Project: n.a.

TOYOTA HEADQUARTER
Switzerland
Project: n.a.

MICROSOFT HEADQUARTER
Dublin - Ireland
Project: n.a.

CHALET VALDEMORILLO
Valdemorillo (Madrid) - Spain
Project: n.a., 2000

PARC RICHELIEU
Bordeaux - France
Project: Xaveer De Geyter, 2007

ZLIN UNIVERSITY LIBRARY
Zlin – Czech Republic
Project: AI Design Prague, 2007

PARKING
Lyon - France
Project: Cabinet Vurpa, 2008

MIDDLE EAST

BOALJ PETROSHIMI
Mahshahr - Iran
Project: Ghoreishi, 2003

PRIVATE PROJECT
Budaiya - Bahrain
Project: n.a., 2004

RESIDENTIAL & COMMERCIAL BUILDING
Juffair - Bahrain
Project: n.a., 2004

AL UDEID – U.S. ARMY
Doha – Qatar
Project: n.a., 2004

UNIVERSITY OF BAHRAIN
Zalaq - Bahrain
Project: Bahrain University, 2004

20 VILLAS COMPOUND
Tameer - Bahrain
Project: Modern Project, 2005

30 VILLAS COMPOUND
Jasra - Bahrain
Project: Adel Ahmedi, 2005

SORKHABI KINDER GARDEN
Tehran - Iran
Project: Ghoreishi, 2005-2006

ELEGANCE TOWER
Tehran - Iran
Project: Ghoreishi, 2005-2006

SHAH KARAM TOWER
Karaj - Iran
Project: Ghoreishi, 2006

MAJLES
Tehran - Iran
Project: Ghoreishi, 2006

PRIVATE HOUSE
Tehran - Iran
Project: Mohajeranj, 2006

KJAN HOTEL
Tehran - Iran
Project: Sirous Gerayli, 2006

ASIA

BUDDHA LECTURE ROOM
Taichung - Taiwan
Project: Daniel Tai, 2008

TEACHING BUILDING OF YI WU INDUSTRY AND
COMMERCIAL COLLEGE
Yi Wu, Zhe Jiang - China
Project: Engineer Liu, 2002-2005

JIUHUA NEW GARDEN
Shanghai - China
Project: n.a., 2005

WUXI TECHNIC CONTROLLING BUILDING
Wuxi - China
Project: n.a., 2006

FU SHEN GARDEN
Jiang Ying, Jiang Su - China
Project: Engineer Zhang, 2006

WORKSHOP OF GOOD FRIENDS SHOES CO., LTD.
Wen Ling, Zhe Jiang - China
Project: Engineer Li, 2006

HOLIDAY INN
Shanghai - China
Project: Mr. Ruan Zheng, 2007

KUNSHAN CULTURE SQUARE
Kunshan - China
Project: EDAW, 2007

USA

SHAKER HEIGHTS HIGH SCHOOL
Shaker Heights (Ohio) - USA
Project: Christian & Klopper Associates, 2007

n.a. = not available

EUROPE

Vitrablok s.r.o.
Administration, Offices
Factories, Warehouses
Bilinská 782/42
419 01 Duchcov
Czech Republic
Tel: +420 417 818 111
Fax: +420 417 835 807

Vitrablok s.r.o.
Sales & Marketing Dept.
Administration
Via delle Robinie, 12
50019 Sesto F.no
Florence - Italy
Tel: +39 055 449 51
Fax: +39 055 455 295

USA

Seves Glassblock Inc.
10576 Broadview Road,
Broadview Heights,
Ohio 44147 – USA
Phone: +1-440-627-6257
Toll Free: +1-877-738-3711

© Seves Glassblock 2008

Photographs: Luis Asín, Roberto Germogli-Fotocronache, Andrea Jemolo,
Carlo Lavatori, Walter Monti-Zerotremedia, Martino Morelli, Carlos Parrondo,
Matteo Piazza, Lapo Ruffi – LRA, Studio Sartogo, Schulze & Pampus
Architekten BDA

Art Direction: Christoph Radl
Graphic Design: Antonella Provasi

With thanks:
Atelier Mendini & Anna Gili
Piero Pasqualetti
Vittorio Savi

Colour separations: Fotolito Farini, Milano

SEVES
GLASS
BLOCK
TAILORMADE

www.sevesglassblock.com

Vitrablok s.r.o.
Bílinská 782/42
419 01 Duchcov
Czech Republic
Tel: +420 417 818 111
Fax: +420 417 835 807

Vitrablok s.r.o.
Via delle Robinie, 12
50019 Sesto F.no
Florence - Italy
Tel: +39 055 449 51
Fax: +39 055 455 295

Seves Glassblock Inc.
10576 Broadview Road,
Broadview Heights,
Ohio 44147 – USA
Phone: +1-440-627-6257
Toll Free: +1-877-738-3711